

6.3 Reliable Messaging with “Poll” binding pattern

The Reliable Message Acknowledgment or Fault message MAY also be sent back on a different HTTP connection from the HTTP connection used to send the message being acknowledged when the Poll request is issued. The RM-Reply corresponding to the Poll request MAY either be synchronous or asynchronous depending upon the presence of replyTo attribute in the PollRequest element.

6.3.1 Synchronous Poll Response

When the Poll request doesn't include the replyTo attribute, then the RM-Reply is sent back as a HTTP Response on the same HTTP connection used to send the Poll request.

This is illustrated in Figure 9.

Figure 9 Synchronous Poll response binding pattern

[[Use the same figure 9]]

- (1) The sender initiates a HTTP connection, and sends a Message using HTTP POST request.
- (2) The HTTP response to the (1) has no HTTP Message Body. Example 13 is an example of this HTTP response.
- (3) The sender initiates a different HTTP connection, and sends a PollRequest message with HTTP POST request. Example 15 is an example of this message. Note that the PollRequest element doesn't have a replyTo attribute.
- (4) The HTTP response for (3) includes Acknowledgment message and/or Reliable Messaging Fault. Example 16 is an example for this message.

1453 **Example 15 PollRequest message with synchronous poll response binding pattern**

```
1454 POST /abc/servlet/wsrnEndpoint HTTP/1.0
1455
1456 Content-Type: text/xml; charset=utf-8
1457 Host: 192.168.183.100
1458 SOAPAction: ""
1459 Content-Length: 1021
1460
1461 <?xml version="1.0" encoding="UTF-8"?>
1462 <soap:Envelope xmlns:soap="http://schemas.xmlsoap.org/soap/envelope/" >
1463   <soap:Header>
1464     <PollRequest
1465       xmlns="http://www.oasis-open.org/committees/wsrn/schema/1.1/SOAP1.1"
1466       soap:mustUnderstand="1">
1467       <RefToMessageIds groupId="mid://20040202.103832@oasis-open.org/">
1468         <SequenceNumberRange from="0" to="20"/>
1469       </RefToMessageIds>
1470     </PollRequest>
1471   </soap:Header>
1472   <soap:Body />
1473 </soap:Envelope>
```

1474

1475 **Example 16 Synchronous Acknowledgment message**

```
1476 HTTP/1.0 200 OK
1477 Server: WS-ReliabilityServer
1478 Date: Mon, 02 Feb 2004 10:38:32 GMT
1479 Content-Language: en
1480 Content-Type: text/xml; charset=utf-8
1481 Content-Length: 924
1482
1483 <?xml version="1.0" encoding="UTF-8"?>
1484 <soap:Envelope xmlns:soap="http://schemas.xmlsoap.org/soap/envelope/" >
1485   <soap:Header>
1486     <Response
1487       xmlns="http://www.oasis-open.org/committees/wsrn/schema/1.1/SOAP1.1"
1488       soap:mustUnderstand="1" replyPattern="Poll" >
1489     <SequenceReplies groupId="mid://20040202.103832@oasis-open.org/">
```

1490

1491

1492

1493

1494

1495

1496

1497

1498

1499

1500

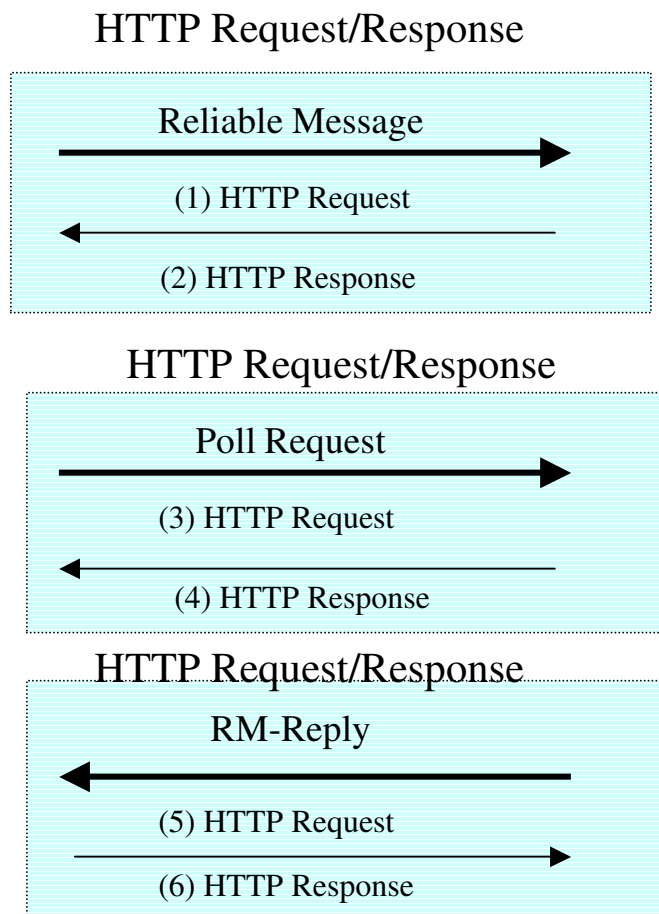
```
<ReplyRange from="0" to="14"/>
  <ReplyRange from="16" to="20"/>
</SequenceReplies>
</Response>
</soap:Header>
<soap:Body />
</soap:Envelope>
```

6.3.2 Asynchronous Poll Response

When the Poll request includes the replyTo attribute, then the RM-Reply is sent back as a HTTP request on a different HTTP connection to the listener identified by the replyTo attribute.

This is illustrated in Figure 10.

Figure 10 Asynchronous Response Poll binding pattern



[[Same as Figure 9 except that boxes should be replaced as above]]

- (1) The sender initiates a HTTP connection, and sends a Message using HTTP POST request.
- (2) The HTTP response to the (1) has no HTTP Message Body. Example 13 is an example of this HTTP response.
- (3) The sender initiates a different HTTP connection, and sends a PollRequest message with HTTP POST request. Example 17 is an example of this message. Note that the PollRequest element has replyTo attribute.
- (4) The HTTP response to the (3) has no HTTP Message Body. Example 13 is an example of this HTTP response.
- (5) The HTTP request corresponding to the Poll request in (3) includes Acknowledgment message and/or Reliable Messaging Fault. Example 18 is an example for this message. This request is sent to the listener identified the replyTo attribute in the PollRequest.
- (6) The HTTP response to the (5) has no HTTP Message Body. Example 13 is an example of this HTTP response.

Example 17 PollRequest message with Asynchronous Poll binding pattern

```
1453
1454
1455 POST /abc/servlet/wsrmsEndpoint HTTP/1.0
1456 Content-Type: text/xml; charset=utf-8
1457 Host: 192.168.183.100
1458 SOAPAction: ""
1459 Content-Length: 1021
1460
1461 <?xml version="1.0" encoding="UTF-8"?>
1462 <soap:Envelope xmlns:soap="http://schemas.xmlsoap.org/soap/envelope/" >
1463   <soap:Header>
1464     <PollRequest
1465       xmlns="http://www.oasis-open.org/committees/wsrmschema/1.1/SOAP1.1"
1466       replyTo = "http://www.oasis-open.org/xyz/servlet/wsrmsListener"
1467       soap:mustUnderstand="1">
1468       <RefToMessageIds groupId="mid://20040202.103832@oasis-open.org/">
1469         <SequenceNumberRange from="0" to="20"/>
1470       </RefToMessageIds>
1471     </PollRequest>
1472   </soap:Header>
1473   <soap:Body />
1474 </soap:Envelope>
```

Example 18 Asynchronous acknowledgment message

```
1476 POST /xyz/servlet/wsrmsListener HTTP/1.0
1477 Content-Type: text/xml; charset=utf-8
1478 Host: 192.168.183.200
1479 SOAPAction: ""
1480 Content-Length: 924
1481
1482 <?xml version="1.0" encoding="UTF-8"?>
1483 <soap:Envelope xmlns:soap="http://schemas.xmlsoap.org/soap/envelope/" >
1484   <soap:Header>
1485     <Response
1486       xmlns="http://www.oasis-open.org/committees/wsrmschema/1.1/SOAP1.1"
1487       soap:mustUnderstand="1" replyPattern="Poll" >
1488     <SequenceReplies groupId="mid://20040202.103832@oasis-open.org/">
```

```
1490     <ReplyRange from="0" to="14"/>
1491     <ReplyRange from="16" to="20"/>
1492   </SequenceReplies>
1493 </Response>
1494 </soap:Header>
1495 <soap:Body />
1496 </soap:Envelope>
```

1497

1498

1499

1500

