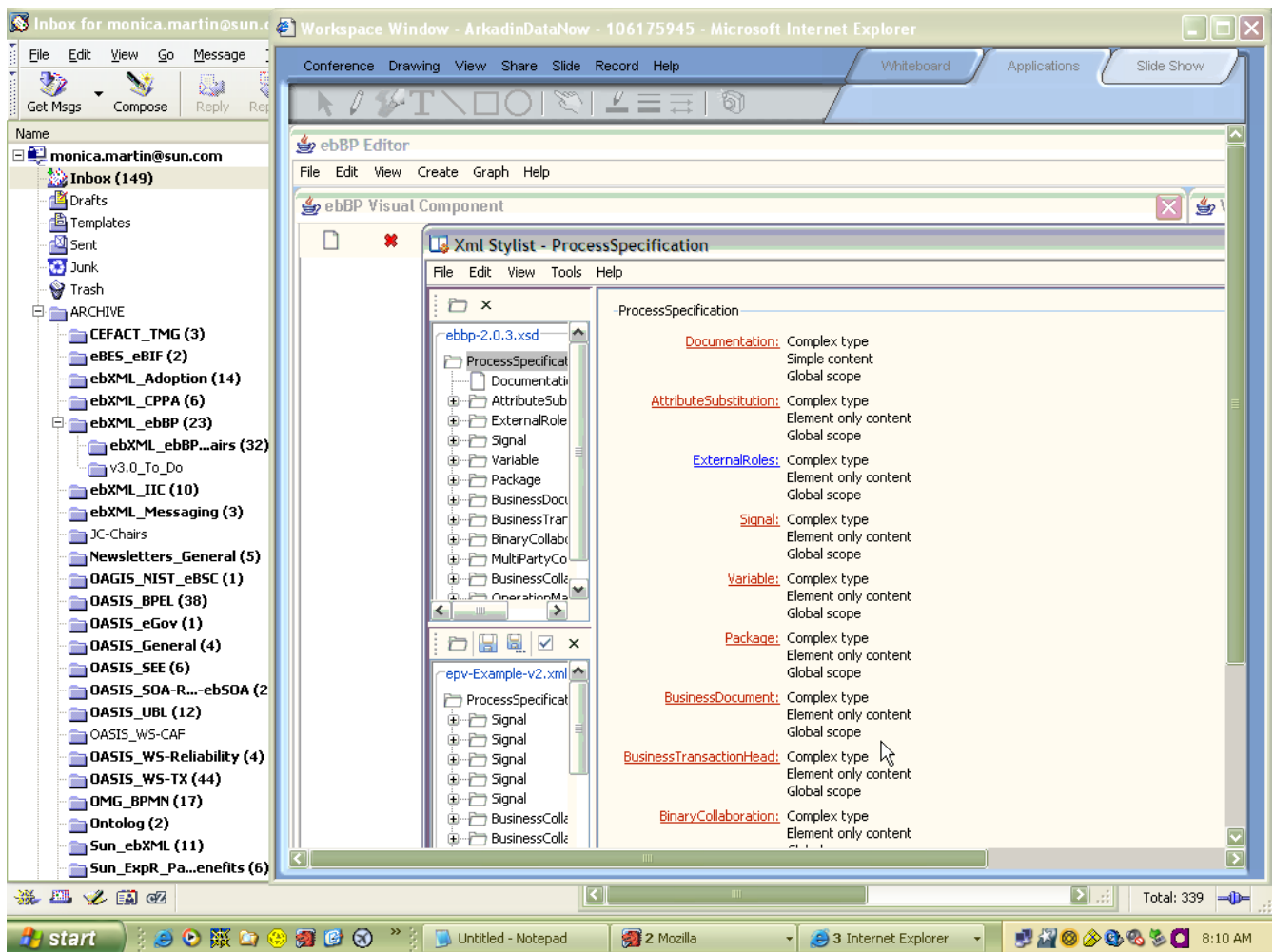


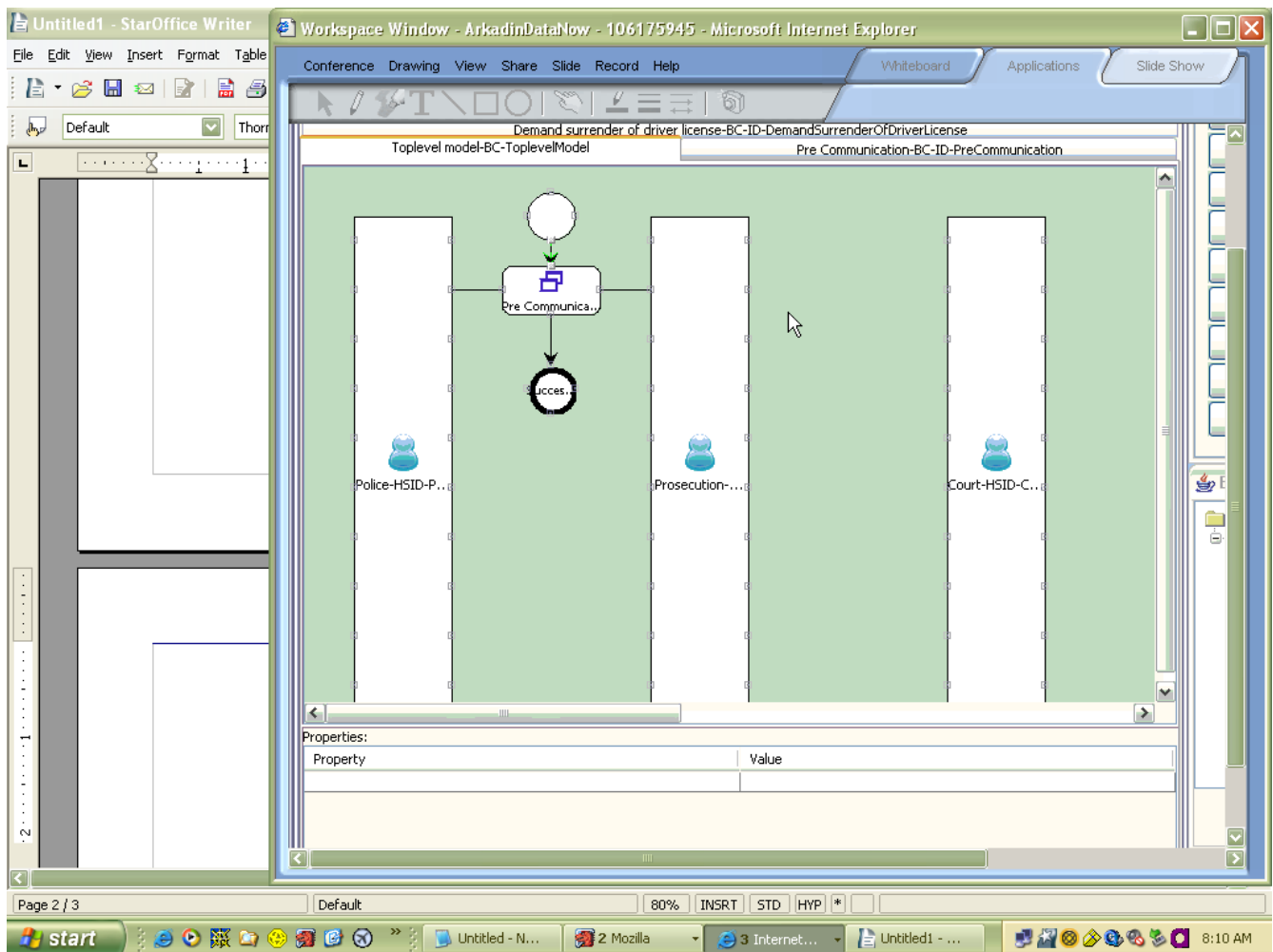
## METU presentation of ebBP v2.0.3 Editor



XML Stylist

Demonstration held 8 August 2006, OASIS ebBP TC

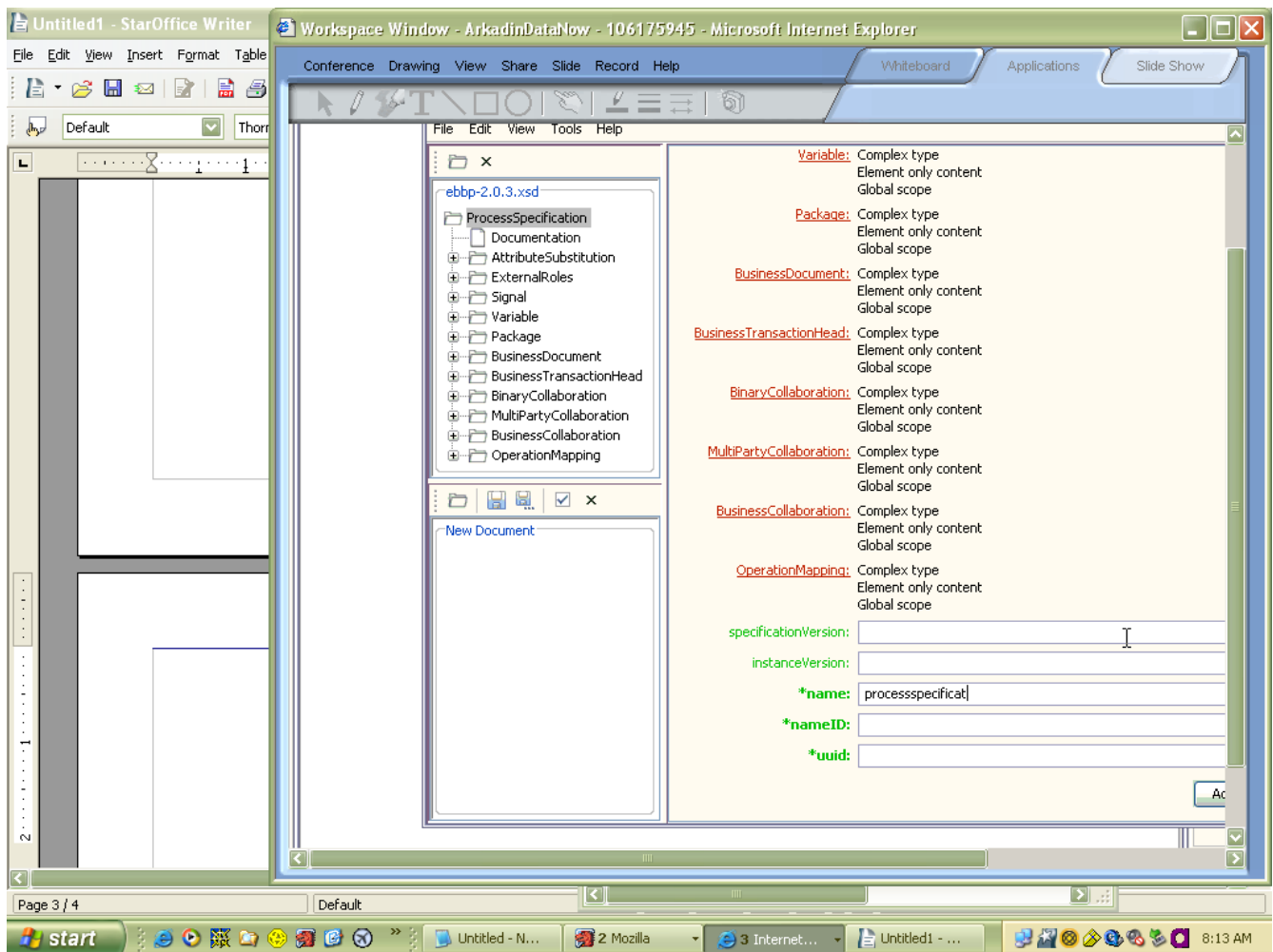
## METU presentation of ebBP v2.0.3 Editor



Using BPMN conventions

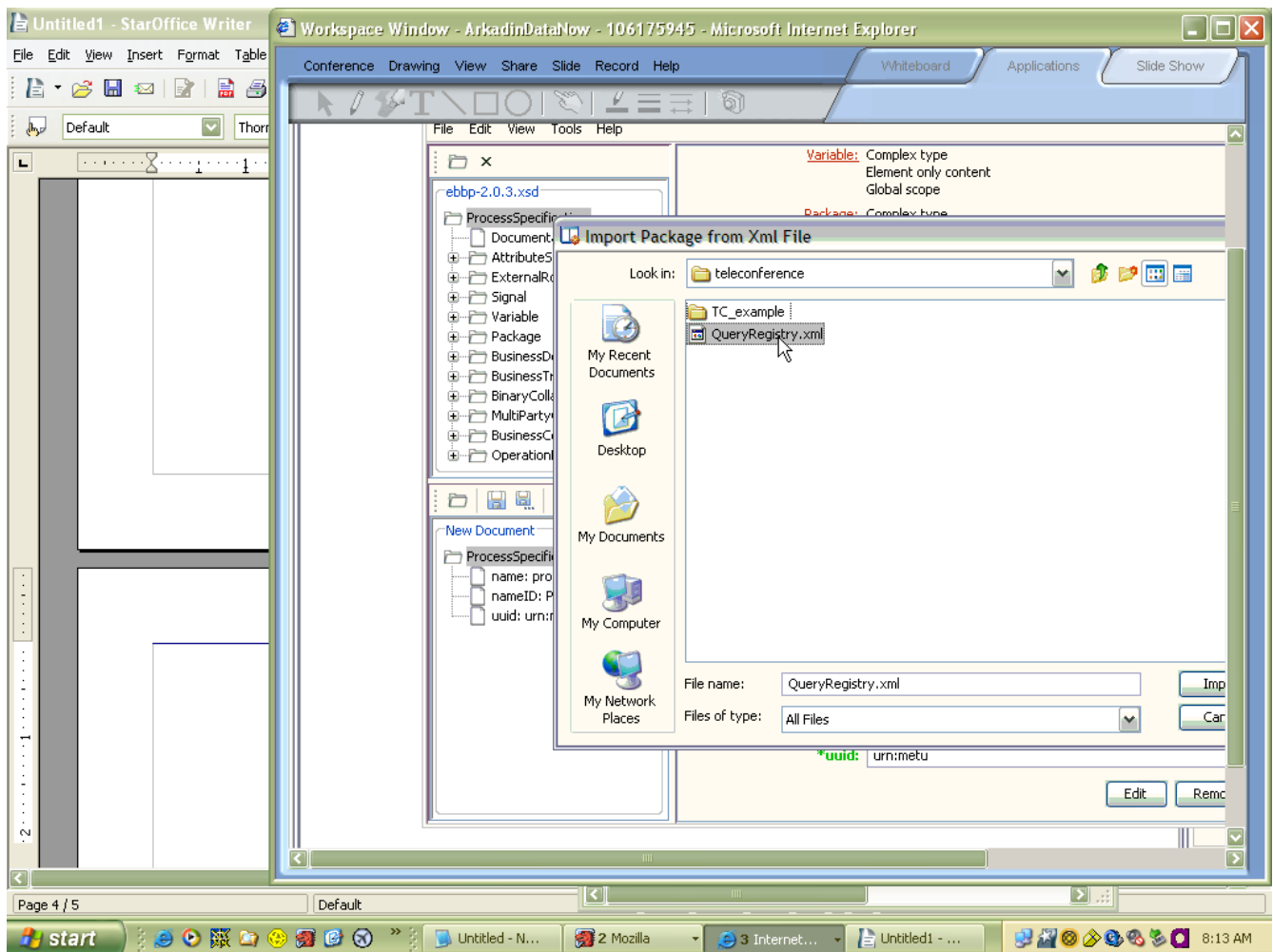
Demonstration held 8 August 2006, OASIS ebBP TC

## METU presentation of ebBP v2.0.3 Editor



Create BC from scratch.

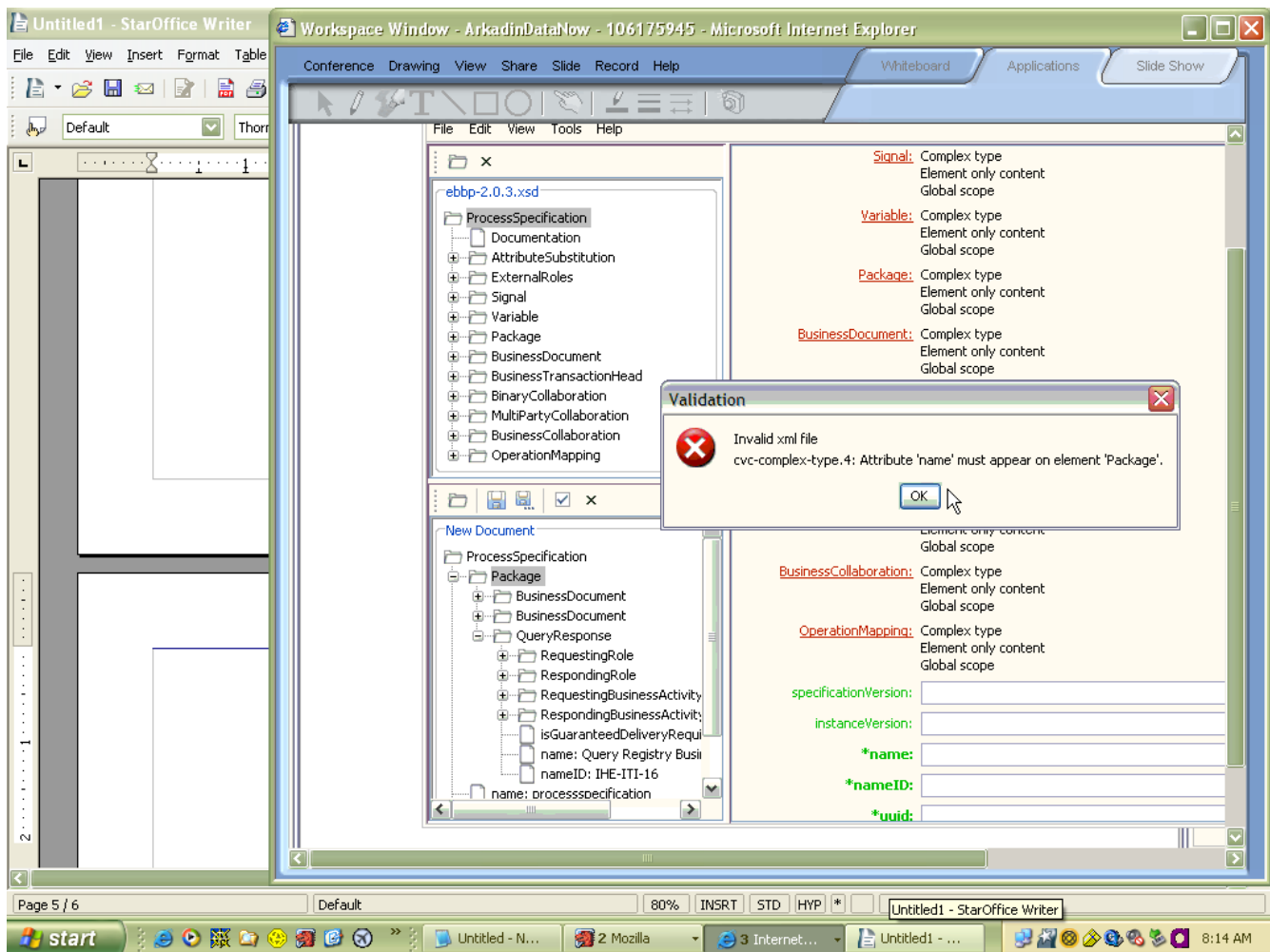
## METU presentation of ebBP v2.0.3 Editor



Import package to create process definition.

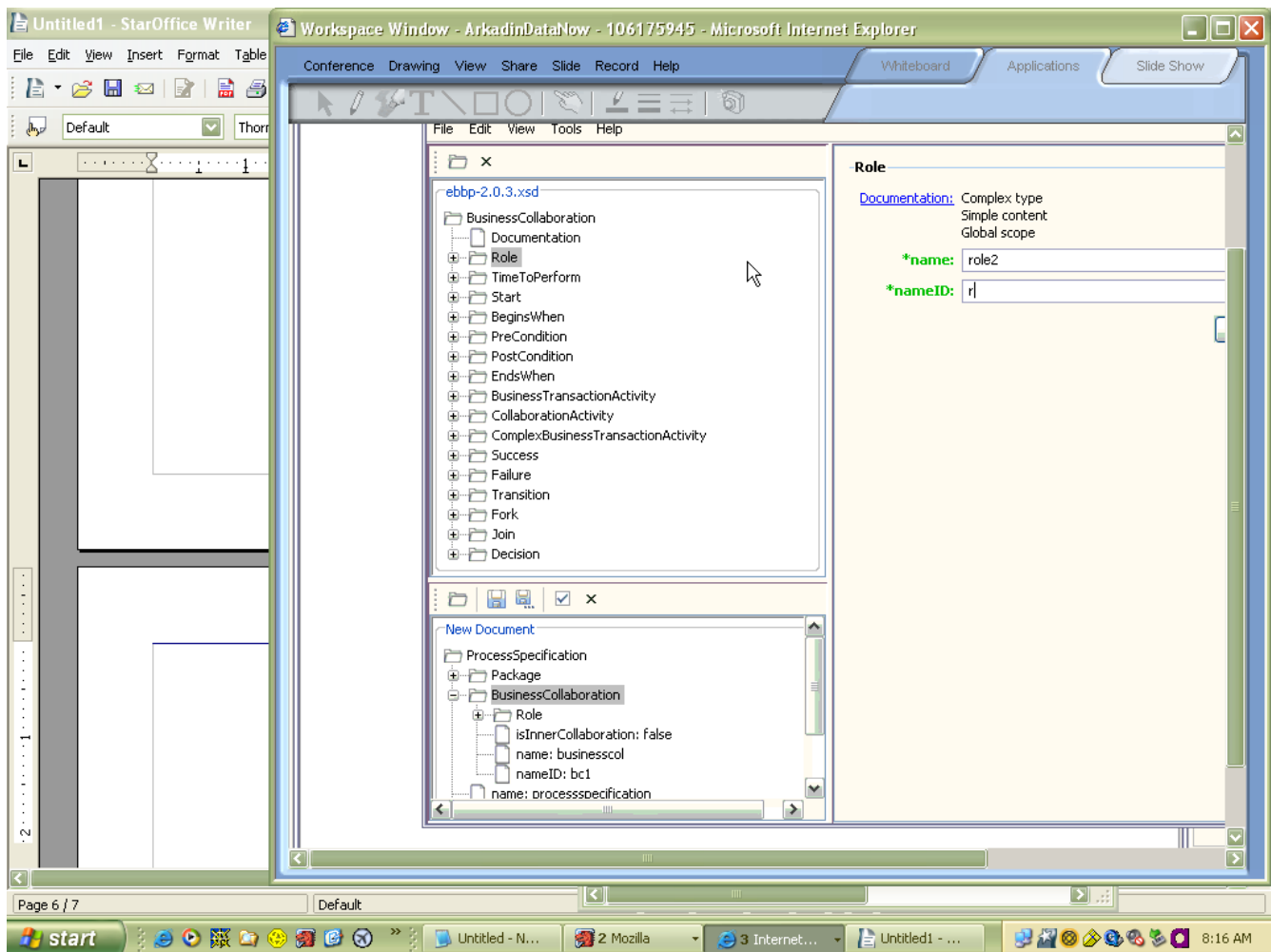
Demonstration held 8 August 2006, OASIS ebBP TC

## METU presentation of ebBP v2.0.3 Editor



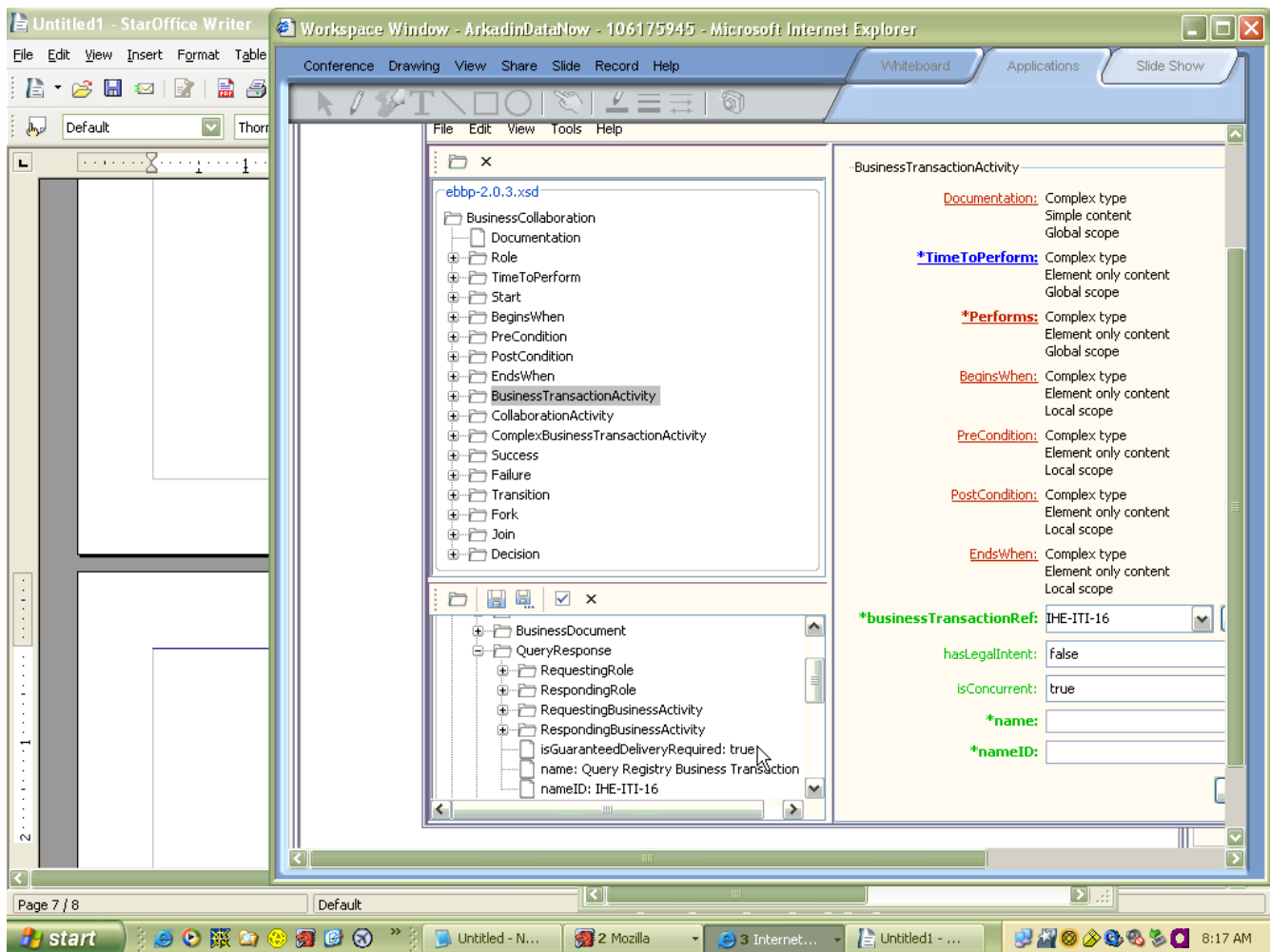
The tool flags missing attributes in the package to create BC.

## METU presentation of ebBP v2.0.3 Editor



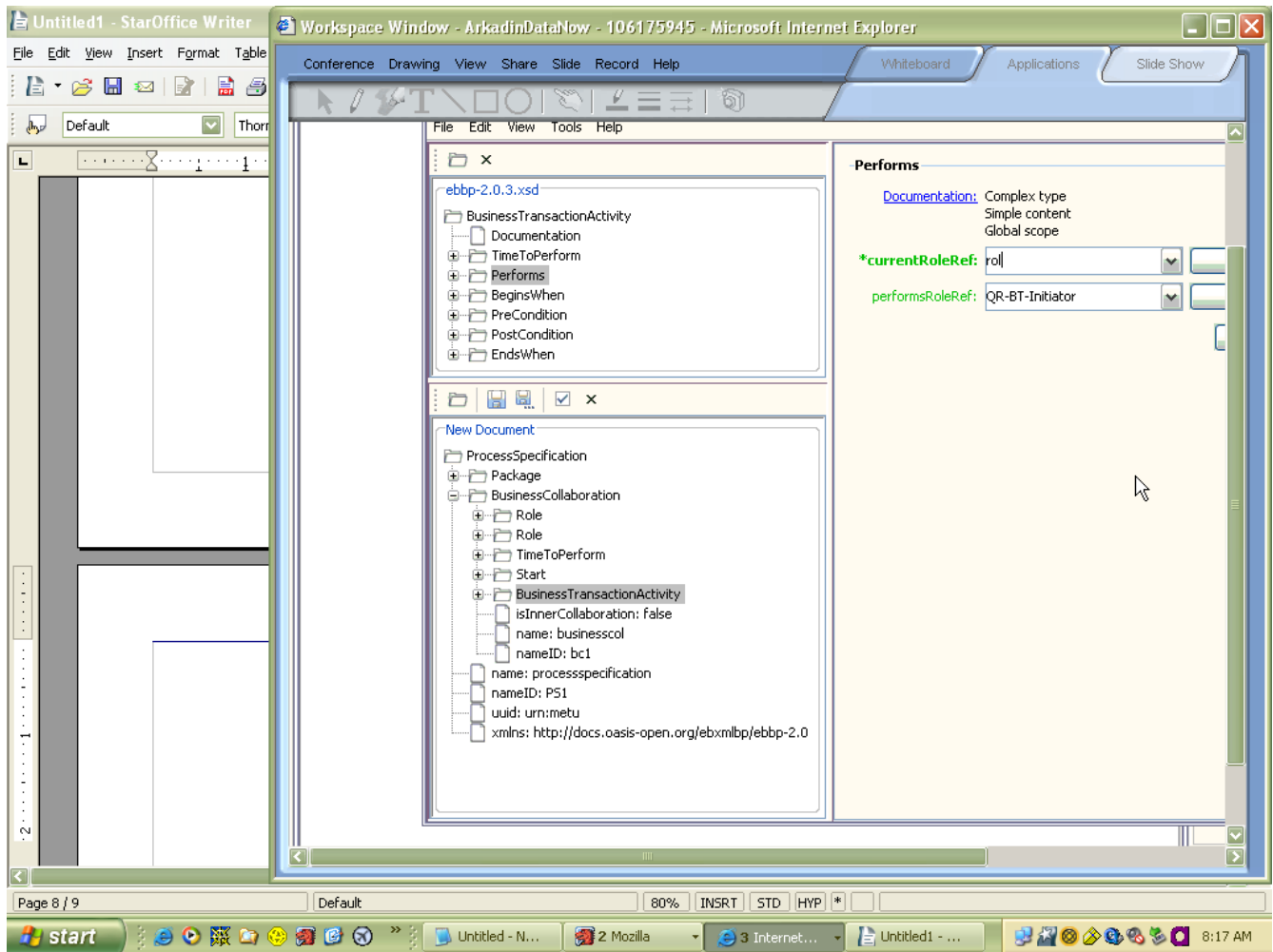
Create roles and TTP element in BC.

## METU presentation of ebBP v2.0.3 Editor



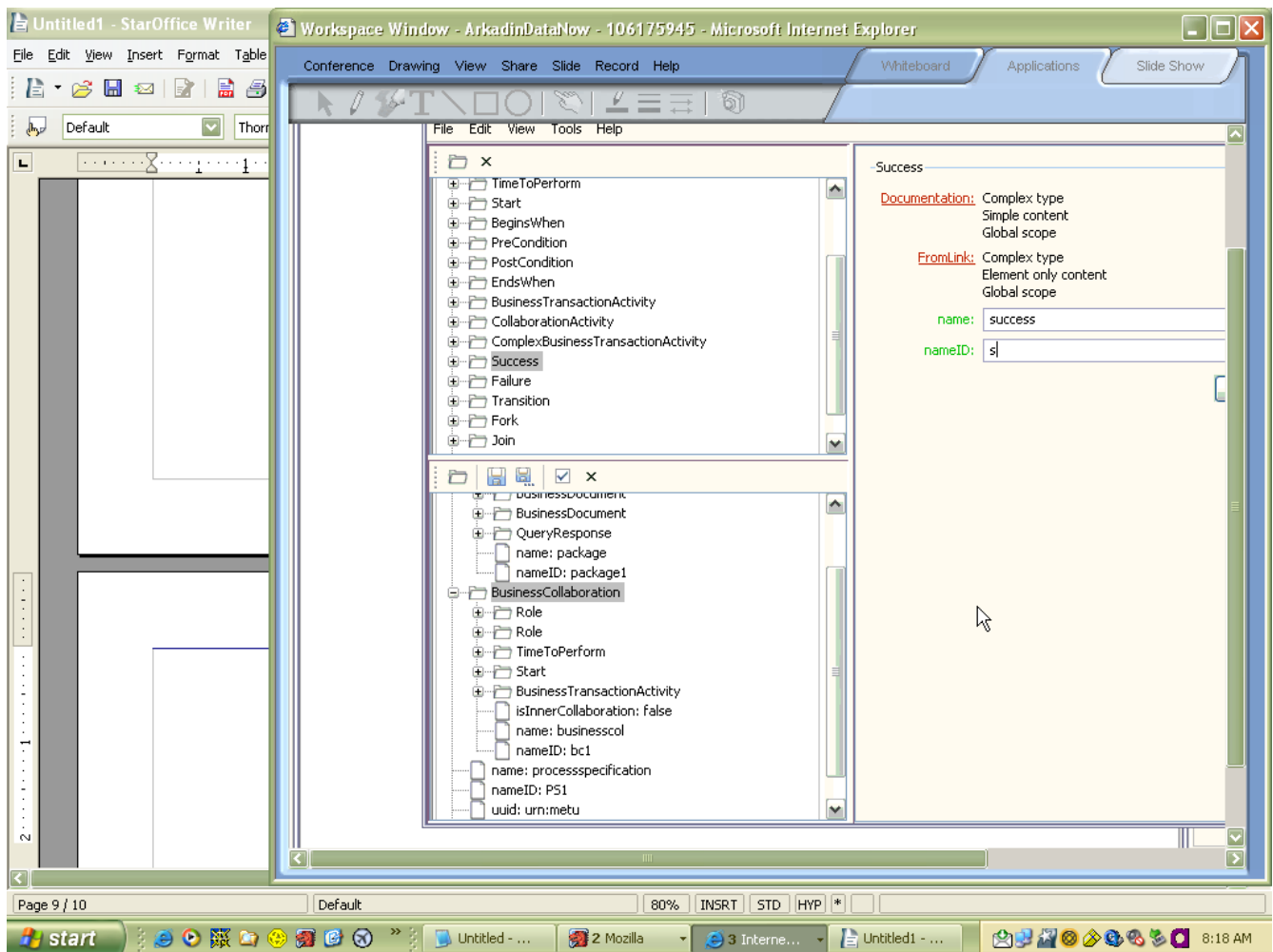
Use BTA imported from EPV (Netherlands).

## METU presentation of ebBP v2.0.3 Editor



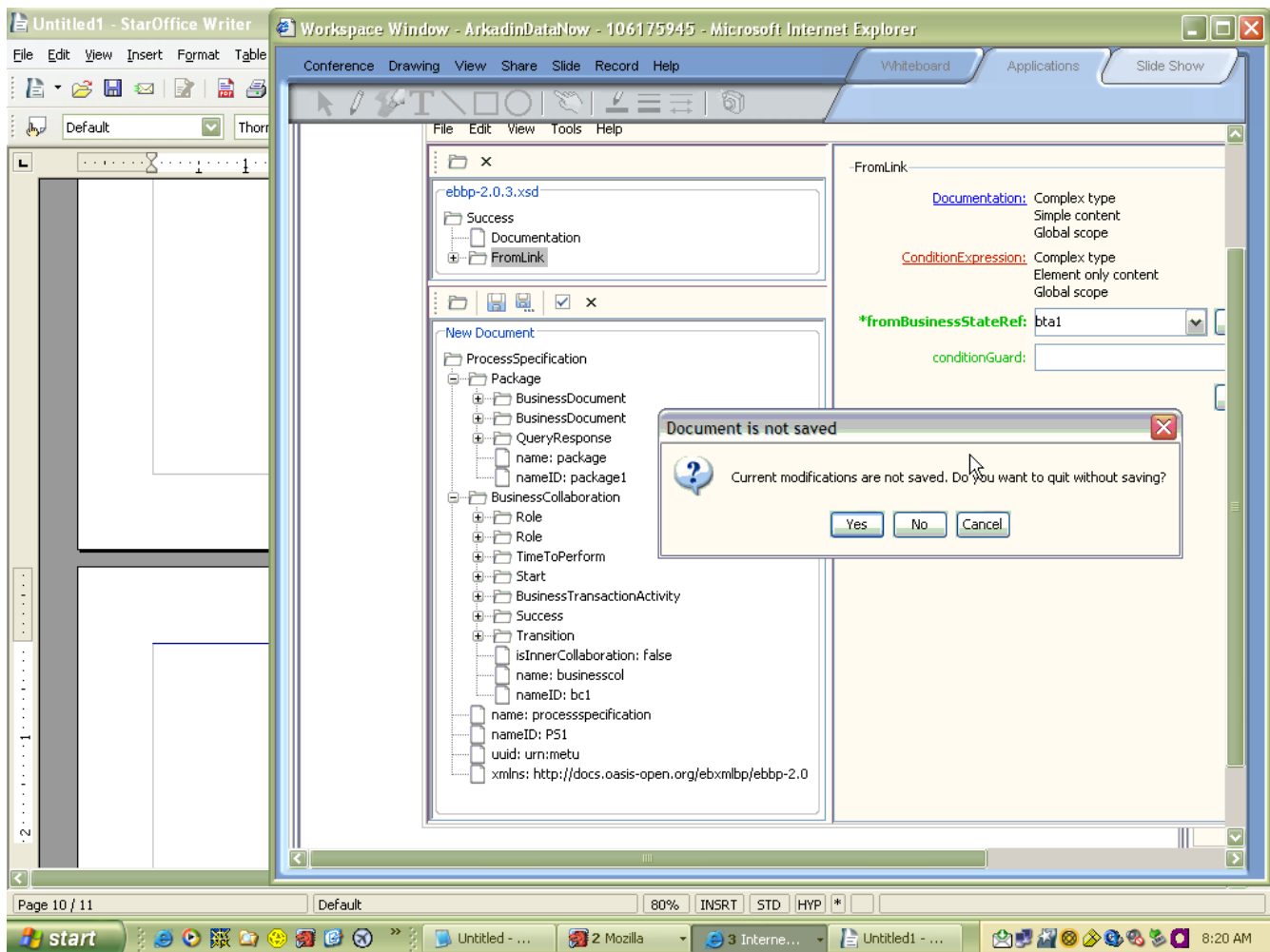
Continue to create roles.

## METU presentation of ebBP v2.0.3 Editor



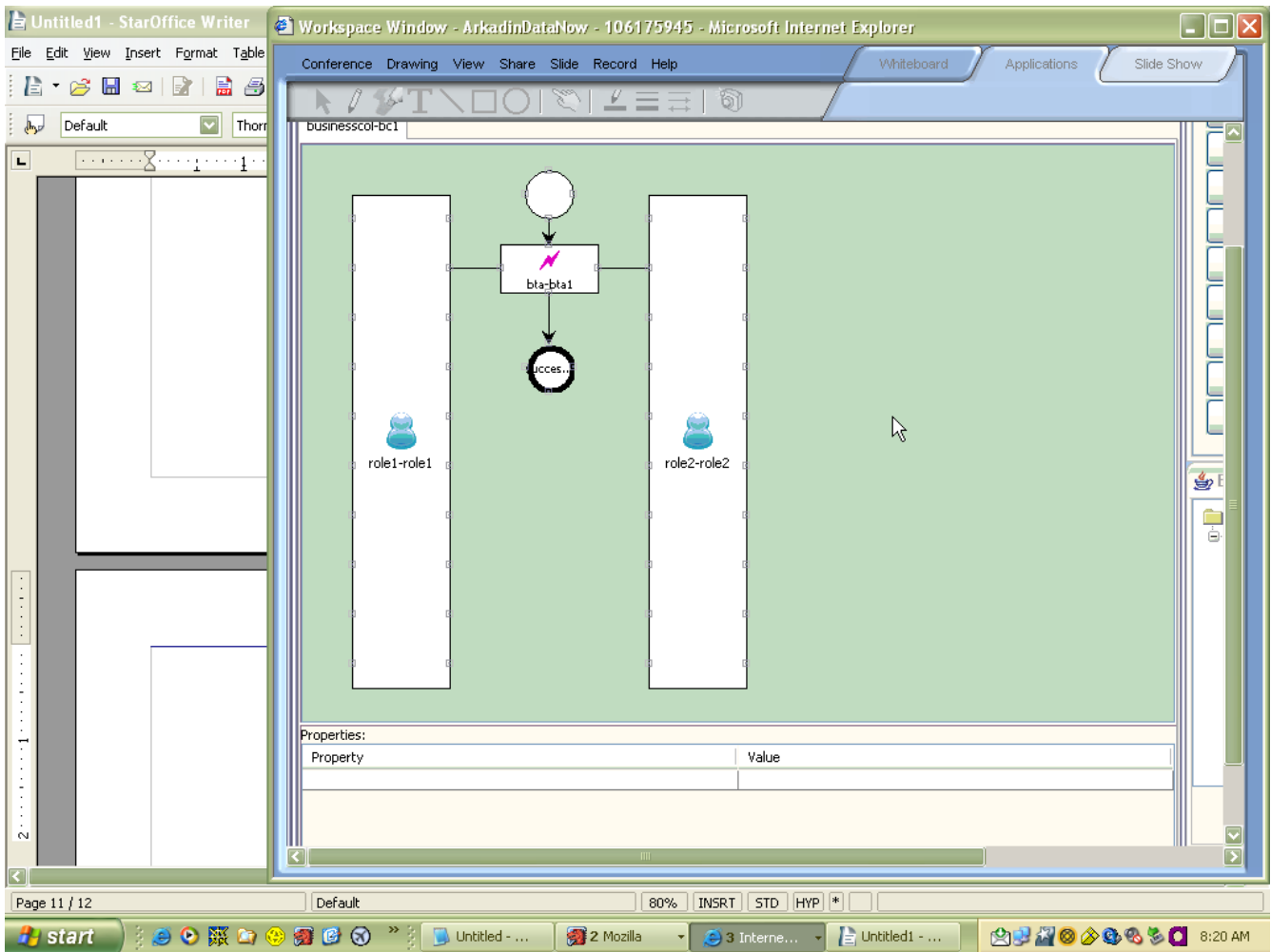
Add transition elements.

## METU presentation of ebBP v2.0.3 Editor



Save current process document before closing.

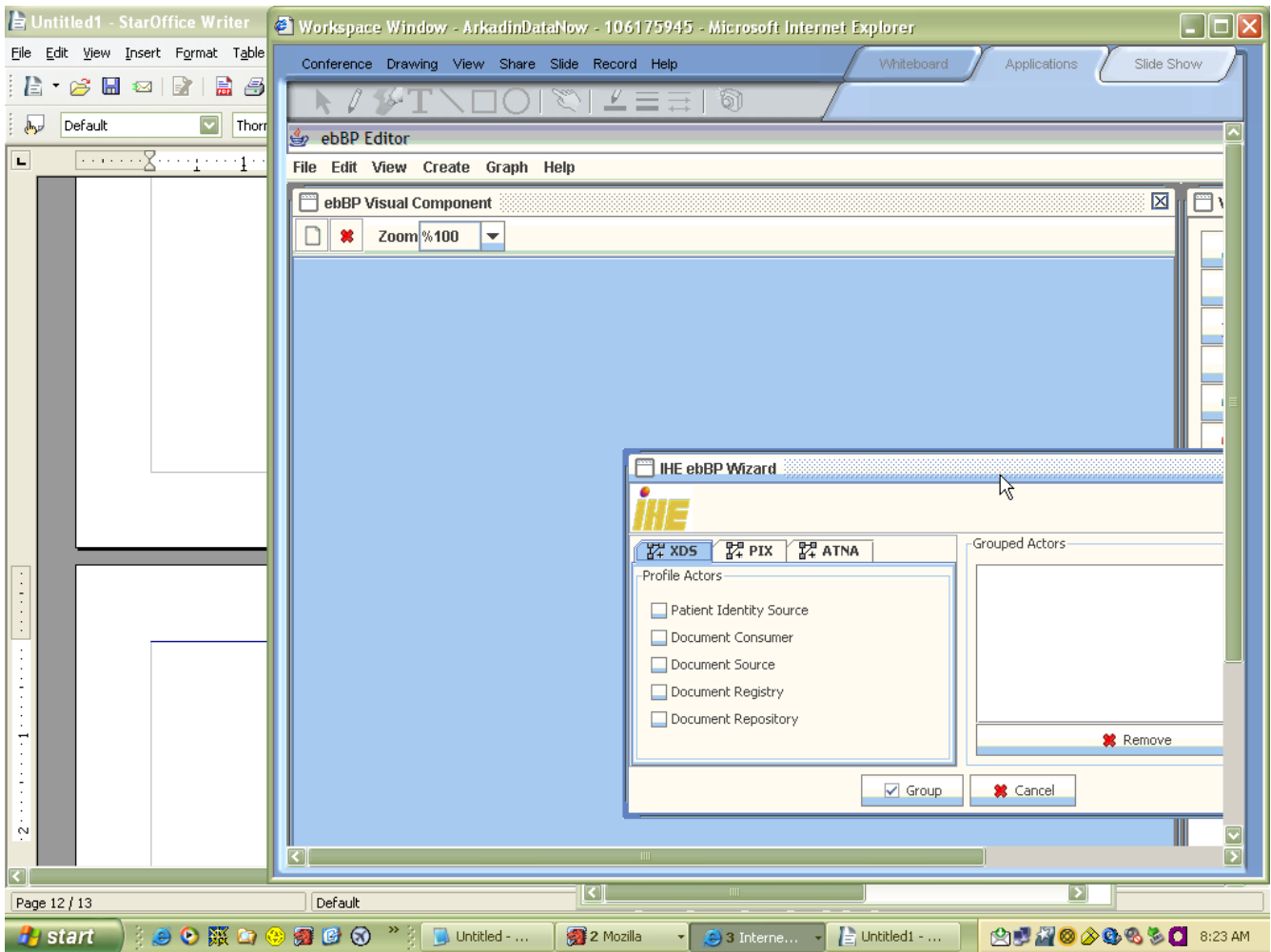
## METU presentation of ebBP v2.0.3 Editor



See graphical view of BC.

Demonstration held 8 August 2006, OASIS ebBP TC

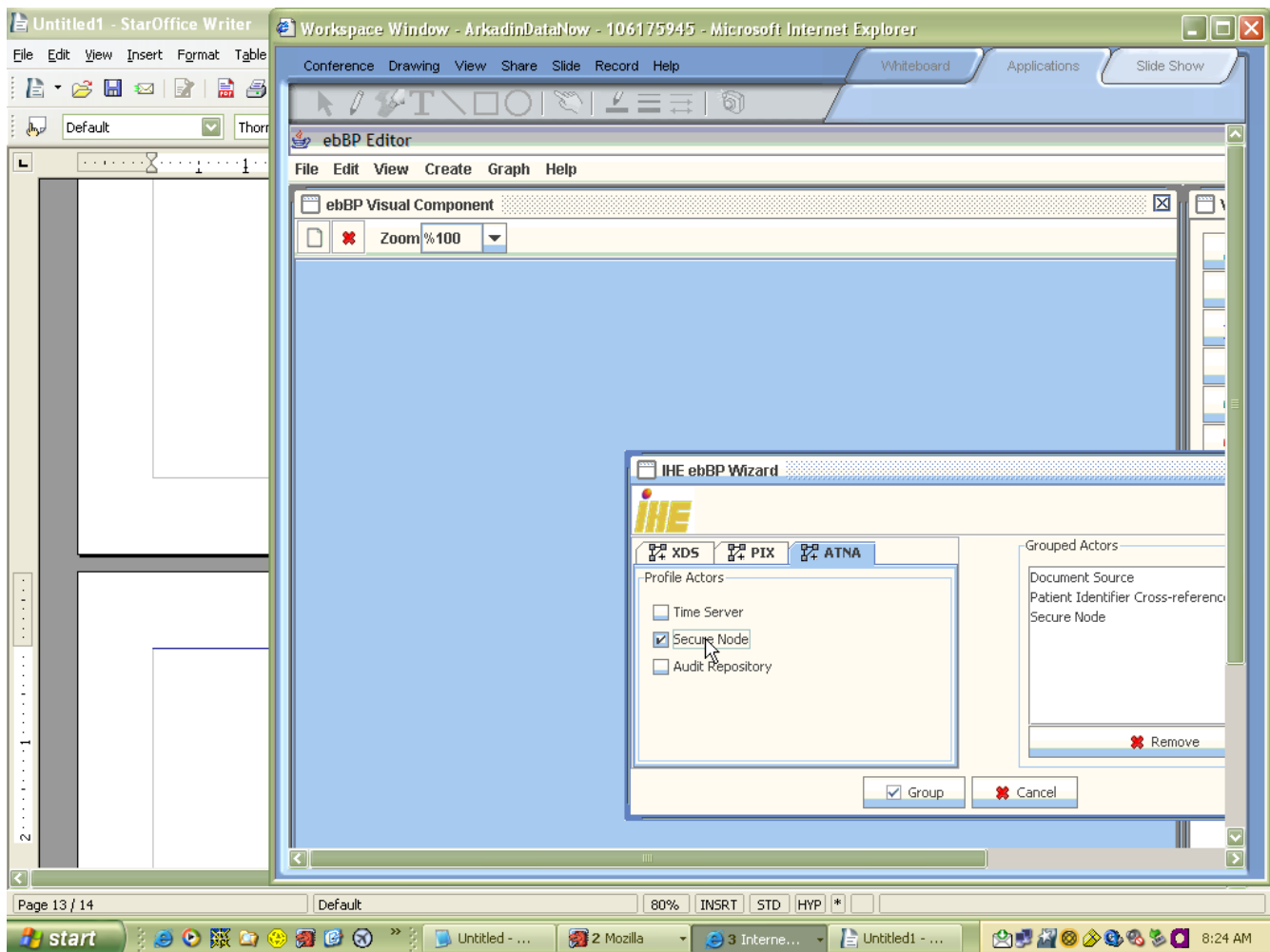
## METU presentation of ebBP v2.0.3 Editor



See existing profiles from IHE.

Demonstration held 8 August 2006, OASIS ebBP TC

## METU presentation of ebBP v2.0.3 Editor



Select actors from different profiles to generate process definition for the user.



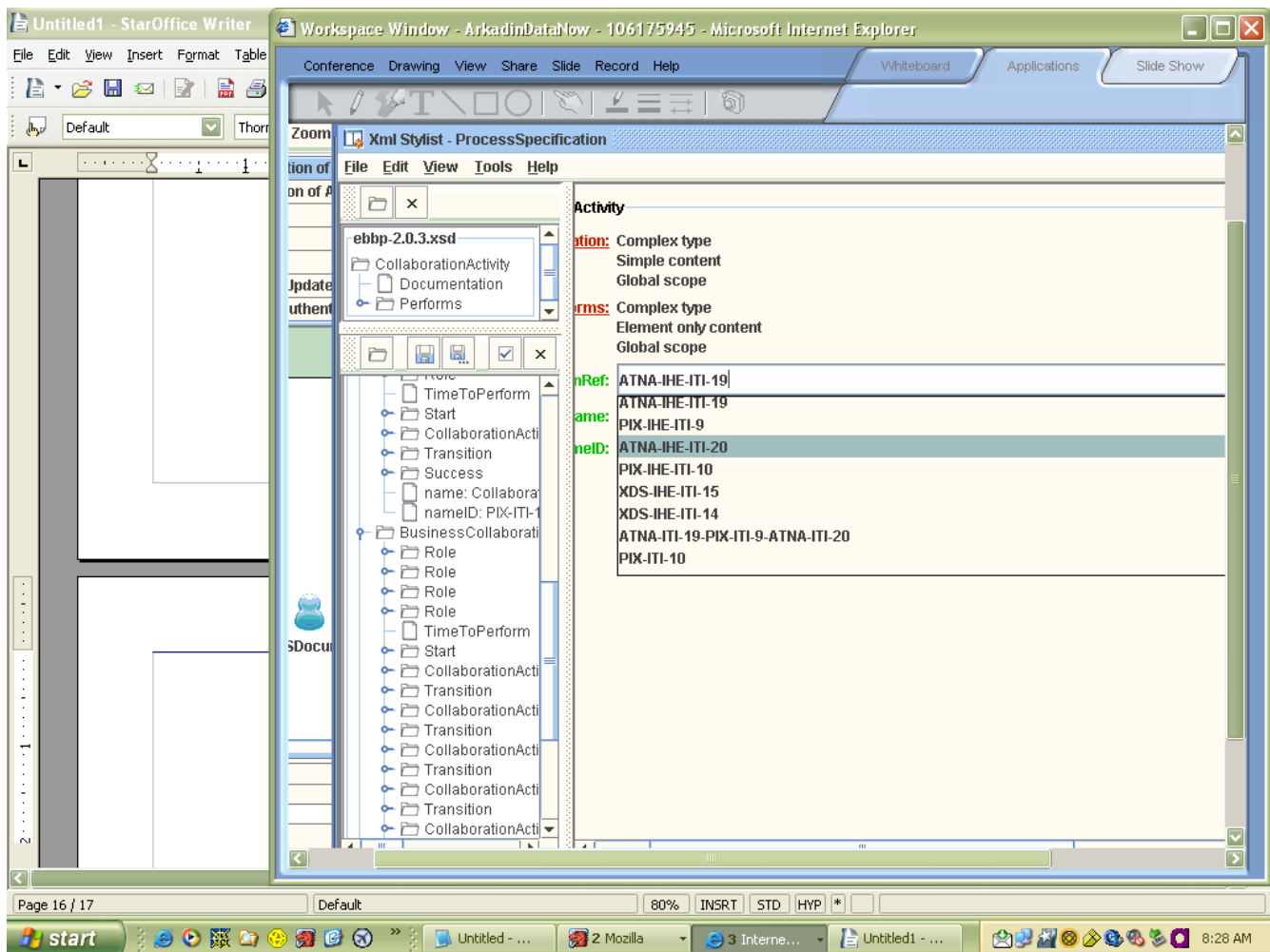
## METU presentation of ebBP v2.0.3 Editor

The screenshot displays the ebBP v2.0.3 Editor interface. The main workspace shows a process diagram with two participant roles: 'XSDDocum...' and 'PIXManager...'. The process flow includes a 'Node Authentic...' activity followed by a 'PIX Query-CA1...' activity. The diagram is set against a green background. To the right of the workspace is a 'Business Transaction Classification' tree, which lists various transaction types such as 'QueryResponse', 'CommercialTransacti', 'RequestResponse', 'Notification', 'InformationDistributio', 'DataExchange', and 'RequestConfirm'. Below the tree is a 'Create Transaction' button. The interface also features a top menu bar with options like 'Whiteboard', 'Applications', and 'Slide Show', and a bottom status bar showing 'Page 15 / 16' and '8:25 AM'.

continued

Demonstration held 8 August 2006, OASIS ebBP TC

## METU presentation of ebBP v2.0.3 Editor



Select information for the CollaborationActivity.

## METU presentation of ebBP v2.0.3 Editor

The screenshot displays the ebBP v2.0.3 Editor interface, which is a web-based tool for editing Business Transaction (BT) models. The interface is divided into several main sections:

- Top Panel:** Contains a menu bar with options like "Conference", "Drawing", "View", "Share", "Slide", "Record", and "Help". Below the menu is a toolbar with various drawing and editing tools.
- Left Panel:** A vertical toolbar with icons for different actions, including a "Default" button and a "Thorn" button.
- Main Canvas:** The central area where the Business Transaction diagram is being edited. It shows a flowchart with nodes such as "Node Authentic...", "PIX Query-CA1...", "PIXManager...", "Record Audit E...", and "XSDDocum...". Arrows indicate the flow of the transaction process.
- Right Panel:** A vertical toolbar containing a list of Business Transaction Classification (BTC) types, including "Role", "BusinessTransactionActivity", "CollaborationActivity", "ComplexBusinessTransactionActivity", "Success", "Failure", "Fork", "Join", and "Decision". Below this is a "Business Transaction Classification" window showing a list of file paths for different transaction patterns, such as "file:conf/ebbp.owl#BusinessTransactionPatte", "file:conf/ebbp.owl#QueryResponse", "file:conf/ebbp.owl#CommercialTransactio", "file:conf/ebbp.owl#RequestResponse", "file:conf/ebbp.owl#Notification", "file:conf/ebbp.owl#InformationDistribution", "file:conf/ebbp.owl#DataExchange", and "file:conf/ebbp.owl#RequestConfirm".
- Bottom Panel:** A "Value" field and a "Create Transaction" button.

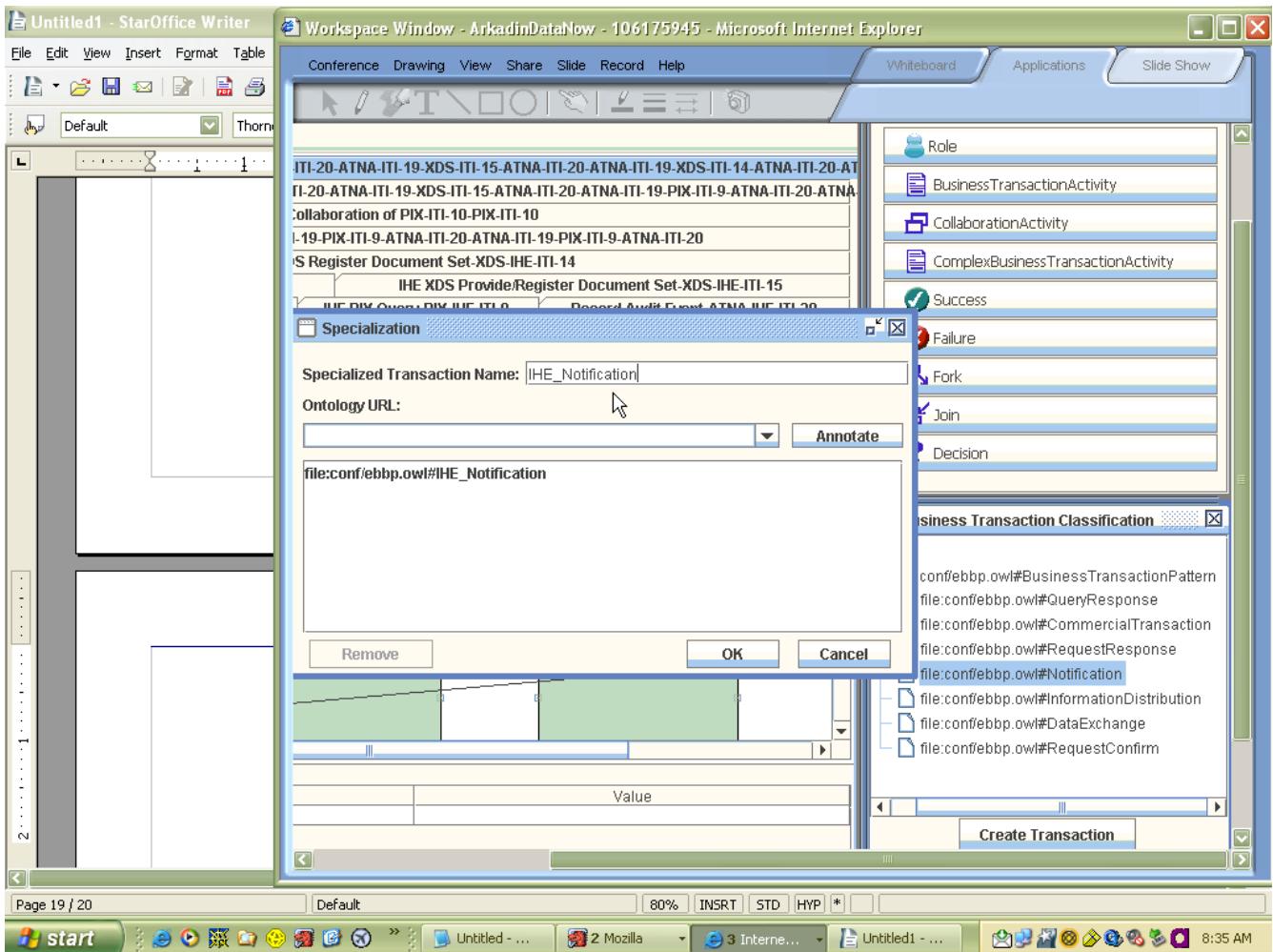
The interface is running in a browser window titled "Workspace Window - ArkadinDataNow - 106175945 - Microsoft Internet Explorer". The system tray at the bottom shows the time as 8:33 AM and the date as 8/8/2006.

See OWL and BT classification.

Demonstration held 8 August 2006, OASIS ebBP TC

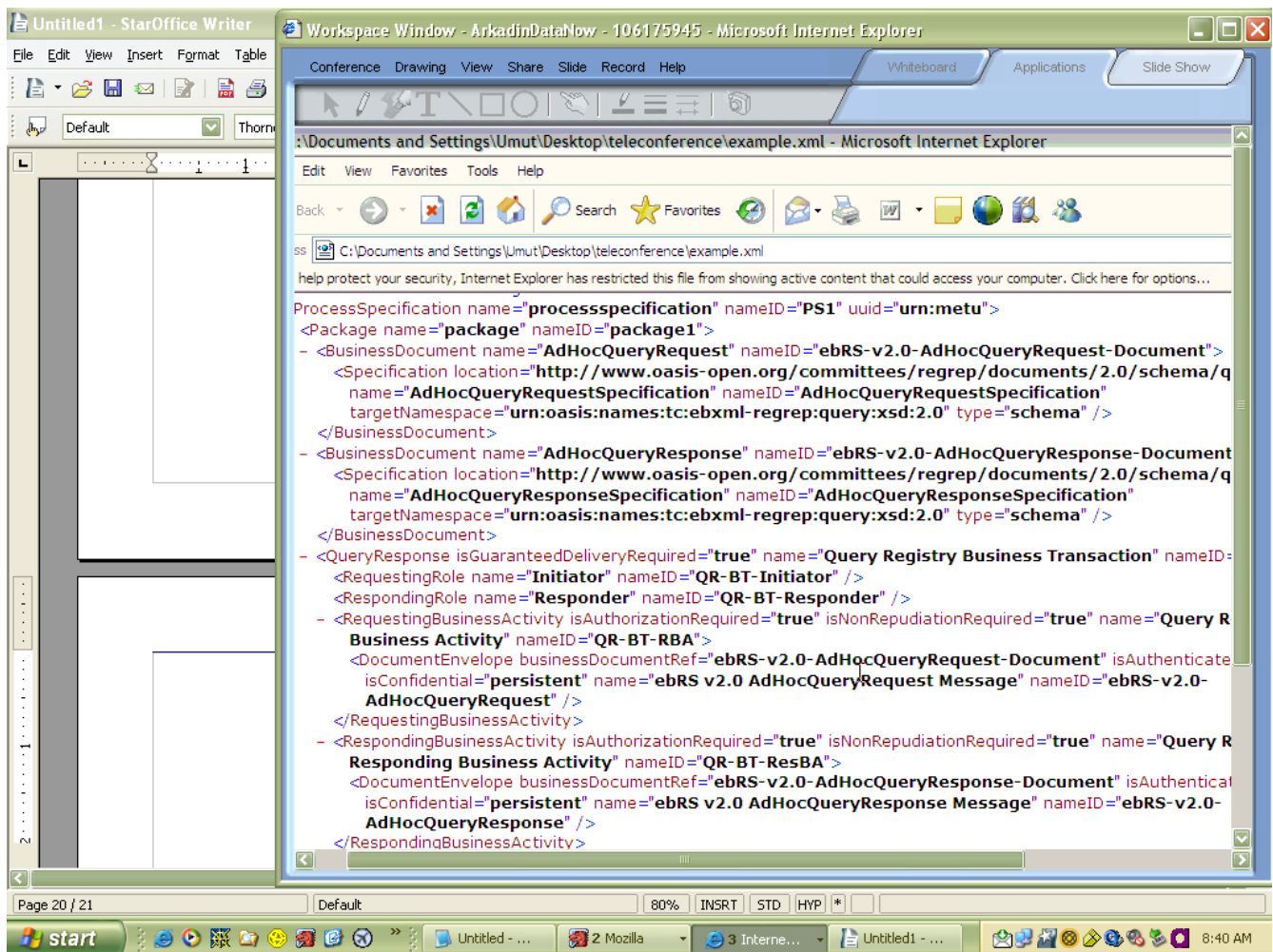


## METU presentation of ebBP v2.0.3 Editor



Specialize a BT pattern (using Data Exchange element).

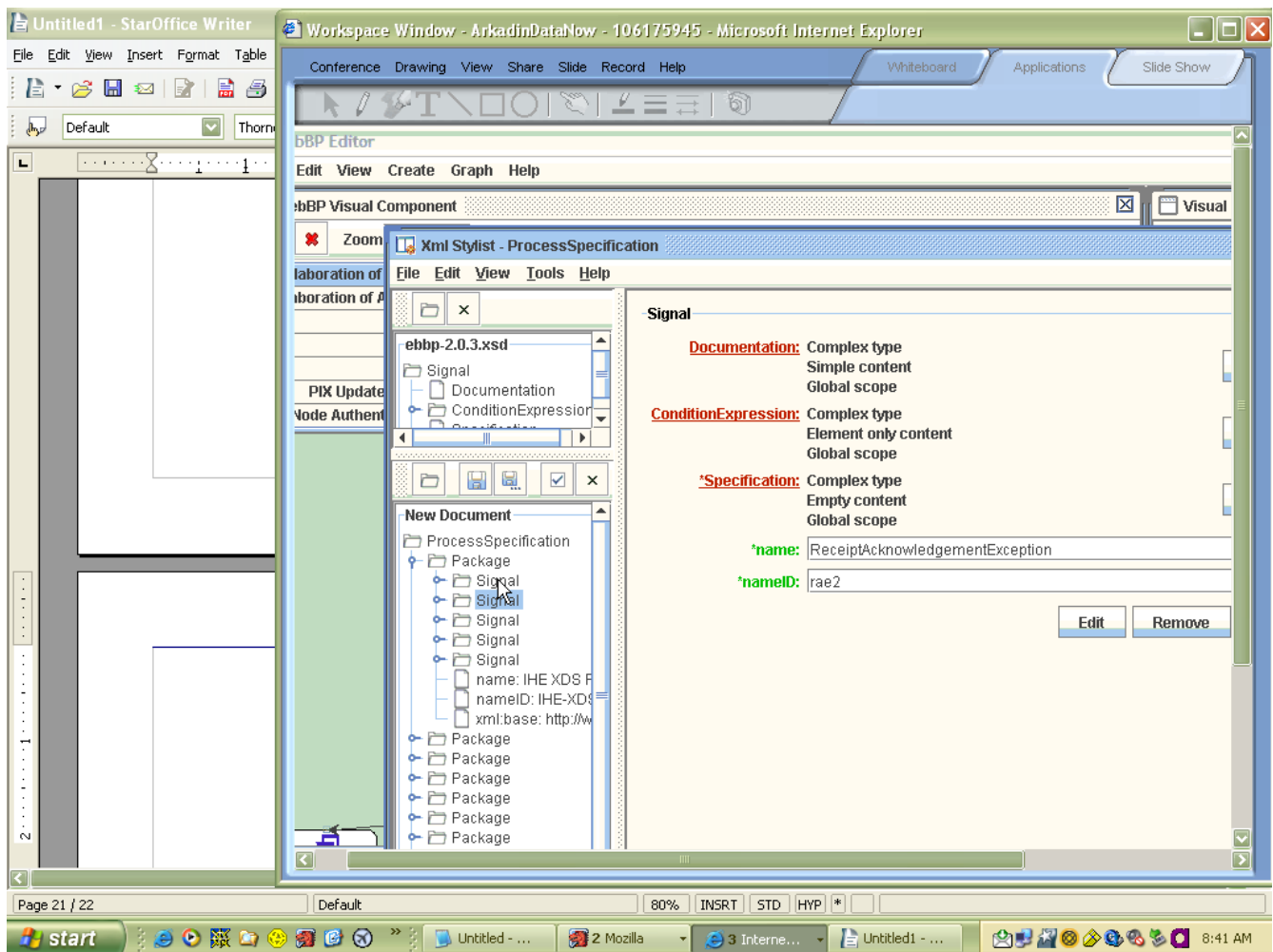
## METU presentation of ebBP v2.0.3 Editor



Validate against core schema.

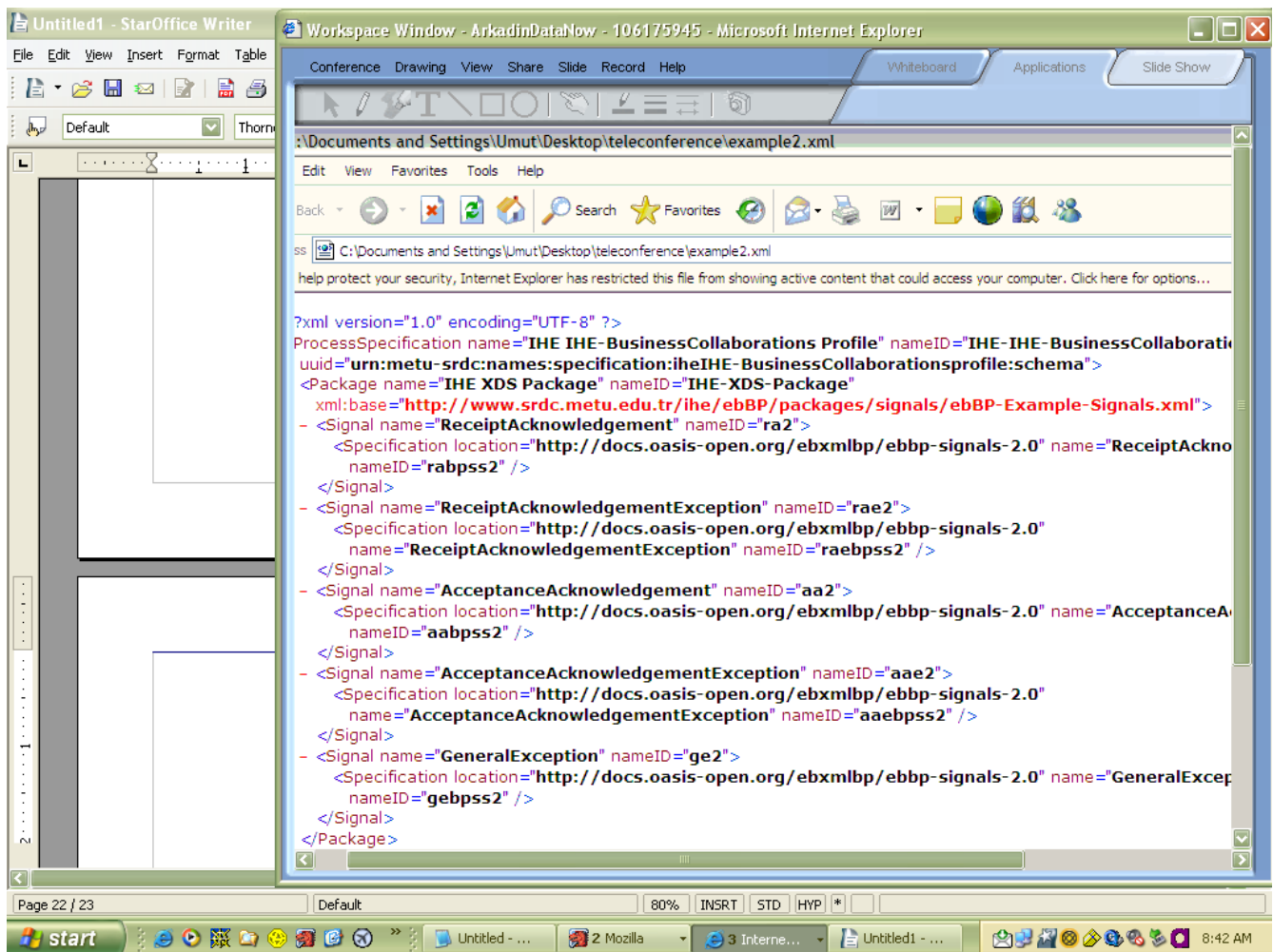
Demonstration held 8 August 2006, OASIS ebBP TC

## METU presentation of ebBP v2.0.3 Editor



This shows the signals used in the package.

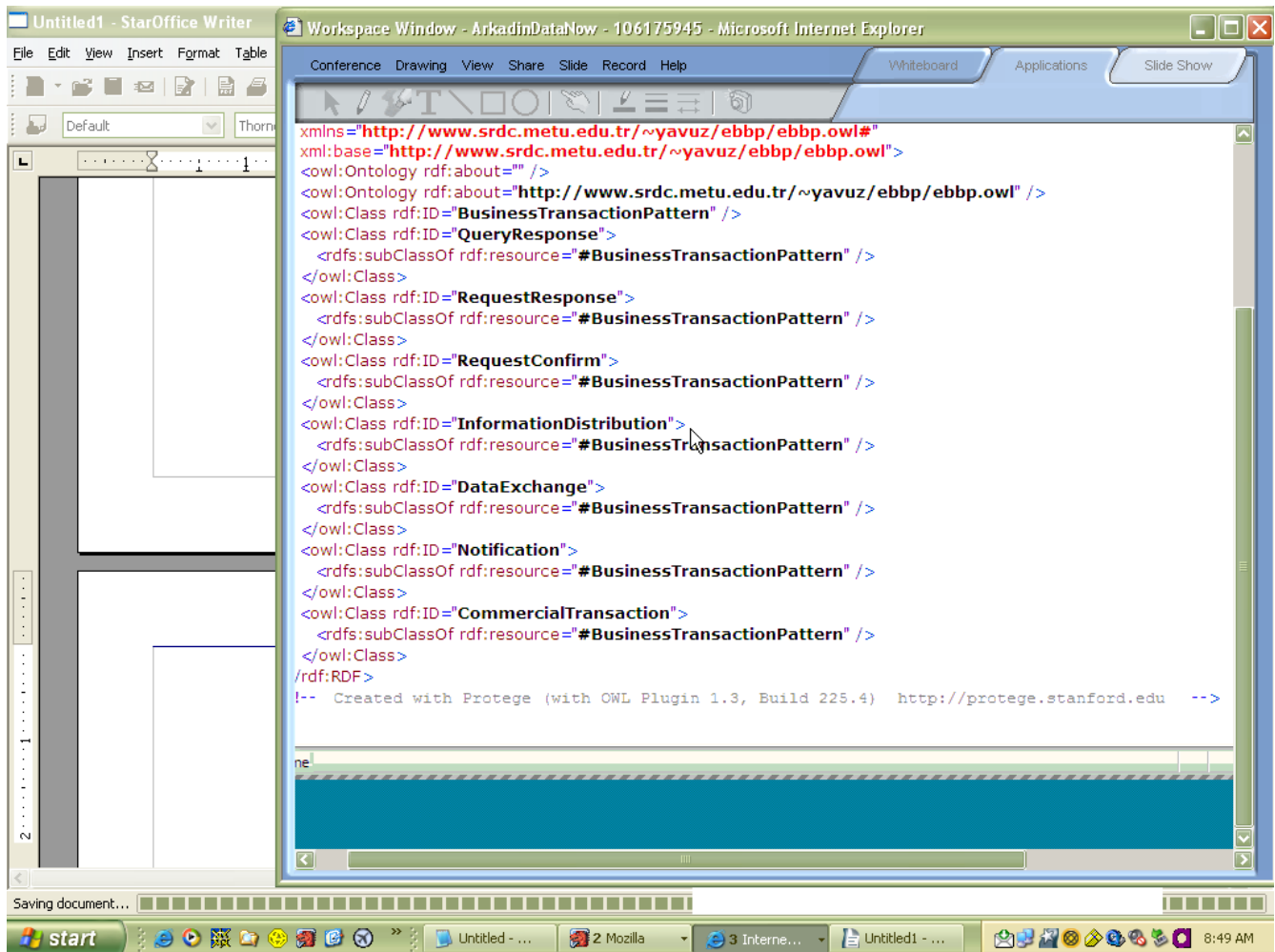
## METU presentation of ebBP v2.0.3 Editor



Shows creation of signals used in the BT.

Retrieve BT and put into the collaboration automatically including the signals.

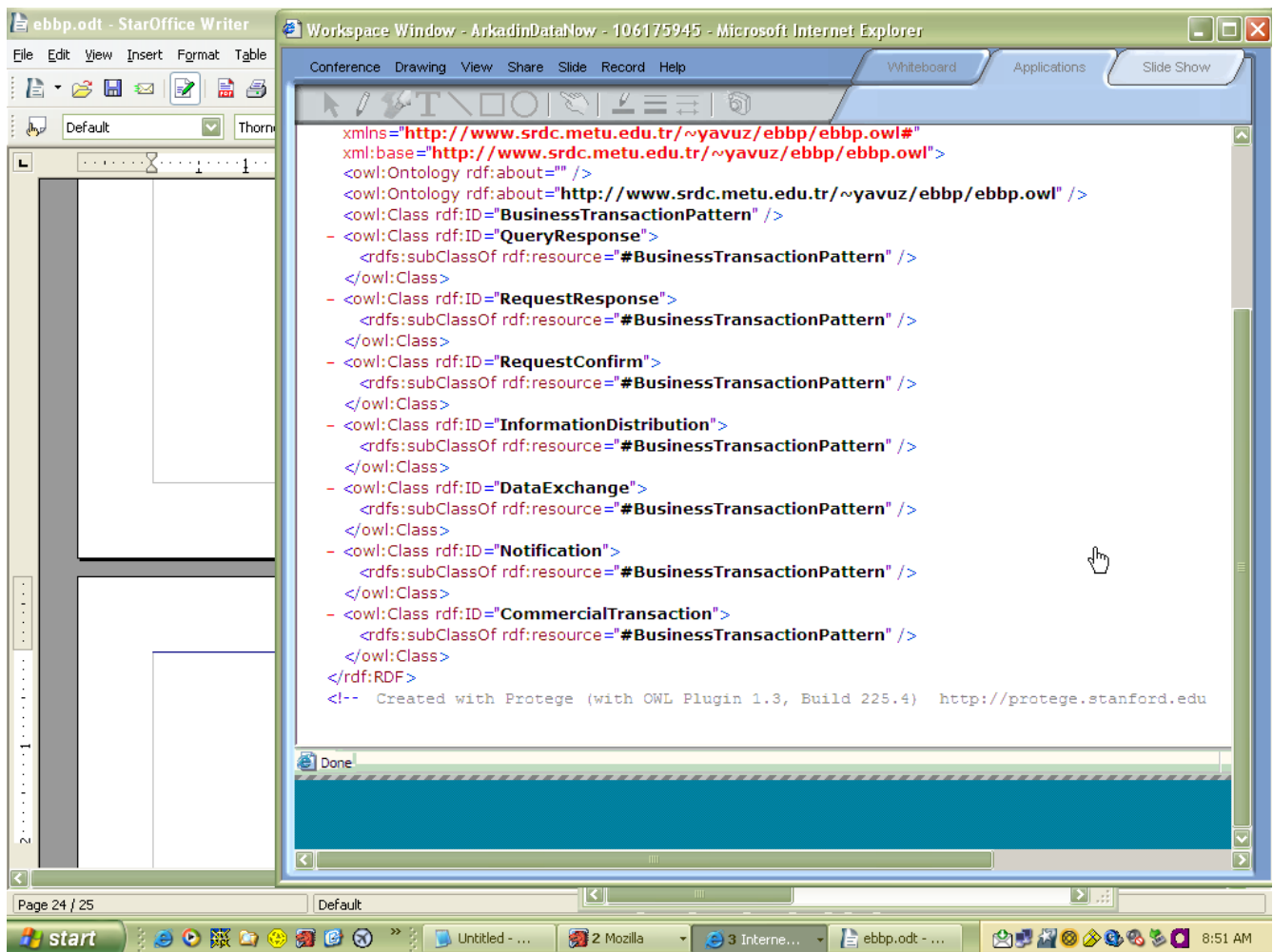
## METU presentation of ebBP v2.0.3 Editor



See the OWL document provides ontology for the BT patterns.

Demonstration held 8 August 2006, OASIS ebBP TC

## METU presentation of ebBP v2.0.3 Editor



continued