



Deployment Profile of Information Appliances Services for WS-Reliability 1.1 Version 1.0

Committee Draft

11 April 2007

Specification URIs:

This Version:

<http://docs.oasis-open.org/wsr/profile/wsr-profile-ias-cd.pdf>

Latest Version:

<http://docs.oasis-open.org/wsr/profile/wsr-profile-ias-cd.pdf>

Technical Committee:

OASIS Web Services Reliable Messaging Technical Committee

Chair:

Tom Rutt, Fujitsu Computer Systems, trutt@us.fujitsu.com

Editors:

Kazunori Iwasa, Fujitsu Limited, kiwasa@jp.fujitsu.com

Jacques Durand, Fujitsu Computer Systems, JDurand@us.fujitsu.com

Related work:

This specification is related to:

- OASIS Web Services Reliability 1.1 OASIS Standard, 15 November 2004

Abstract:

The WS-Reliability 1.1 standard [**WS-Reliability**] contains several configurable features and options. Any use of WS-Reliability requires a certain amount of standardization within a user community. Due to the degree of optionally allowed by the specification, these communities will want to document exactly which parts of it must be deployed and how, in order to foster interoperability on multiple levels between participants. Also, a community may want to further profile the content and format of some message elements, to match their business practices.

Such information may be collected and published as a Deployment Guide for a community. It also represents an agreed-upon convention for the use of a reliability module within the community, the capabilities that are expected from an implementation, and the deployment details. This document is a profile of WS-Reliability for information appliances services.

Status:

This document was last revised or approved by the Web Services Reliable Messaging TC on the above date. The level of approval is also listed above. Check the current location noted above for possible later revisions of this document.

Technical Committee members should send comments on this specification to the Technical Committee's email list. Others should send comments to the Technical Committee by using the "Send A Comment" button on the Technical Committee's web page at <http://www.oasis-open.org/committees/wsr>.

For information on whether any patents have been disclosed that may be essential to implementing this specification, and any offers of patent licensing terms, please refer to the Intellectual Property Rights section of the Technical Committee web page (<http://www.oasis-open.org/committees/wsrn/ipr.php>).

The non-normative errata page for this specification is located at <http://www.oasis-open.org/committees/wsrn>.

Notices

OASIS takes no position regarding the validity or scope of any intellectual property or other rights that might be claimed to pertain to the implementation or use of the technology described in this document or the extent to which any license under such rights might or might not be available; neither does it represent that it has made any effort to identify any such rights. Information on OASIS's procedures with respect to rights in OASIS specifications can be found at the OASIS website. Copies of claims of rights made available for publication and any assurances of licenses to be made available, or the result of an attempt made to obtain a general license or permission for the use of such proprietary rights by implementers or users of this specification, can be obtained from the OASIS Executive Director.

OASIS invites any interested party to bring to its attention any copyrights, patents or patent applications, or other proprietary rights which may cover technology that may be required to implement this specification. Please address the information to the OASIS Executive Director.

Copyright © OASIS® 1993–2007. All Rights Reserved. OASIS trademark, IPR and other policies apply.

This document and translations of it may be copied and furnished to others, and derivative works that comment on or otherwise explain it or assist in its implementation may be prepared, copied, published and distributed, in whole or in part, without restriction of any kind, provided that the above copyright notice and this paragraph are included on all such copies and derivative works. However, this document itself may not be modified in any way, such as by removing the copyright notice or references to OASIS, except as needed for the purpose of developing OASIS specifications, in which case the procedures for copyrights defined in the OASIS Intellectual Property Rights document must be followed, or as required to translate it into languages other than English.

The limited permissions granted above are perpetual and will not be revoked by OASIS or its successors or assigns.

This document and the information contained herein is provided on an "AS IS" basis and OASIS DISCLAIMS ALL WARRANTIES, EXPRESS OR IMPLIED, INCLUDING BUT NOT LIMITED TO ANY WARRANTY THAT THE USE OF THE INFORMATION HEREIN WILL NOT INFRINGE ANY RIGHTS OR ANY IMPLIED WARRANTIES OF MERCHANTABILITY OR FITNESS FOR A PARTICULAR PURPOSE.

The names "OASIS", [insert specific trademarked names and abbreviations here] are trademarks of OASIS, the owner and developer of this specification, and should be used only to refer to the organization and its official outputs. OASIS welcomes reference to, and implementation and use of, specifications, while reserving the right to enforce its marks against misleading uses. Please see <http://www.oasis-open.org/who/trademark.php> for above guidance.

Table of Contents

1	Introduction.....	6
1.1	Purpose.....	6
1.2	Terminology.....	6
1.3	How to Use the Deployment Profile.....	6
2	Overview of the Profile.....	8
2.1	General Objectives.....	8
2.2	Requirements.....	9
2.2.1	Reliable Messaging.....	9
2.2.2	Asynchronous Messaging.....	10
2.3	Use cases to be supported.....	10
2.3.1	Certificate Authority Model.....	10
2.3.2	Use case: Registration and Operation of Information Appliances.....	11
2.4	Required Functions of WS-Reliability.....	15
2.4.1	Three RM-Reply Patterns.....	15
2.4.2	Required Functions for Information Appliances.....	16
2.5	The Scope of this profile.....	16
2.5.1	Messaging Infrastructure Layer.....	17
2.5.2	Application Layer.....	17
2.6	Recommendation of this profile.....	17
2.7	Anticipated Readers of this document.....	17
3	Profiling the Functional Areas of WS-Reliability.....	18
3.1	Guaranteed Delivery Function.....	18
3.2	Duplicate Elimination Function.....	18
3.3	Message Ordering Function.....	19
3.4	Synchronous/Asynchronous Messaging.....	19
3.5	Response RM-Reply Pattern.....	20
3.6	Callback RM-Reply Pattern.....	20
3.7	Poll RM-Reply Pattern.....	20
3.8	ExpiryTime.....	21
3.9	GroupExpiryTime, GroupMaxIdleDuration.....	21
3.10	Sequence and Message Management.....	21
3.11	Schema Extensions.....	21
4	Profile Requirements Details.....	22
4.1	Profile Module: Delivery Assurances and Parameters.....	22
4.1.1	Profile Element: Usage of At-Least-Once.....	22
4.1.2	Profile Element: Acknowledgment Management.....	22
4.1.3	Profile Element: Usage of At-Most-Once.....	23
4.1.4	Profile Element: Usage of In-Order.....	23
4.1.5	Profile Element: Usage of Polling.....	24
4.2	Profile Module: Sequence and Message Management.....	25
4.2.1	Profile Element: General Use of Sequences.....	25
4.2.2	Profile Element: Message Details.....	27
4.3	Profile Module: Schema Extensions.....	28

4.3.1 Profile Element: Extensions to wsrn:Request	28
4.3.2 Profile Element: Extensions to wsrn:Response	28
4.4 Profile Module: SOAP and Transport Bindings	29
4.4.1 Profile Element: SOAP Version.....	29
4.4.2 Profile Element: Transport Protocol	30
4.5 Profile Module: RM Agreement	30
4.5.1 Profile Element: Use of RM Agreements	30
4.5.2 Profile Element: Format.....	31
5 Operational Aspect of the Profile.....	32
5.1 Deployment and Processing requirements for RM Agreements	32
5.2 Message Payload and Flow Profile	32
5.3 Additional Reliability Features beyond WS-Reliability Specification	32
5.4 Profile Management.....	33
5.5 Attachments.....	33
6 References	34
6.1 Normative References	34
A. Acknowledgements	35
B. Revision History.....	36

1 Introduction

1.1 Purpose

The WS-Reliability 1.1 standard **[WS-Reliability]** contains several configurable features and options. Any use of WS-Reliability requires a certain amount of standardization within a user community. Due to the degree of optionally allowed by the specification, these communities will want to document exactly which parts of it must be deployed and how, in order to foster interoperability on multiple levels between participants. Also, a community may want to further profile the content and format of some message elements, to match their business practices.

Such information may be collected and published as a Deployment Guide for a community. It also represents an agreed-upon convention for the use of a reliability module within the community, the capabilities that are expected from an implementation, and the deployment details.

This Deployment Profile Template for WS-Reliability is intended to be filled or instantiated by user communities. Once instantiated and optionally extended with material that is specific to this community, it becomes a Deployment Profile, or Deployment Guide.

By publishing Deployment Profiles for different communities using the same Template format, it will be easier for a user community to consult the configuration setups, as well as conventions used by other user communities with which they may want to interoperate. This will help them to assess whether these two communities will be able to interoperate, or under what conditions.

1.2 Terminology

The key words “MUST”, “MUST NOT”, “REQUIRED”, “SHALL”, “SHALL NOT”, “SHOULD”, “SHOULD NOT”, “RECOMMENDED”, “MAY”, and “OPTIONAL” in this document are to be interpreted as described in **[RFC2119]**.

Source Specification: The specification or standard that is being profiled.

Deployment Profile Template: Document that lists the options in the source specification that may be selected by a user community, that identifies content elements (e.g. message headers, XML values) the format and/or value of which may be further standardized by a community, and that also identifies typical operating conditions under which the source specification may be used, and selected by a user community.

User Community: A group of users, e.g. within a supply-chain industry, the members of which decide to make a similar usage of the source specification in order to be able to interoperate.

Deployment Profile (or Deployment Guide): Document that is an instance of the Deployment Profile Template. It defines which options should / should not be used by this community, which format or value some content elements should comply with, and under which operating conditions the standard must be used by this community.

1.3 How to Use the Deployment Profile

There are three parts in the Deployment Profile Template that need to be instantiated in order to generate a Deployment Profile:

- The section on the source specification functional areas (see section 2 below)
- The section on the profiling requirement details (see section 3 below)
- The section on operating conditions associated with the profile (see section 4 below)

Every feature from the source specification that is candidate for profiling is listed in a “Profile Element” table of the form:

Chart 1

Specification Feature	<Description of the source specification item to be profiled. This is pre-filled in the Deployment Profile Template.>
Specification Reference	<Identifies the item in the source specification. This is pre-filled in the Deployment Profile Template.>
Profile Item (1..N)	<How the item is profiled: option narrowing/selection, content formatting, narrowing structure of XML complex element, content integrity constraint, This is left for a Deployment Profile to fill in.>
Alignment	<Dependency / alignment with other data, e.g. binding, either with other item in this same specification, items from other specifications, or items specified in an external source, e.g. a domain-specific or industry-specific standard. This is left for a Deployment Profile to fill in.>
Test References	<References to related test requirements or test cases that would verify this profiling. This is left for a Deployment Profile to fill in.>
Notes	<Profile-specific comments. This is left for a Deployment Profile to fill in – could be a reminder of the semantics of this feature in the original spec.>

44

45 When no recommendation is made for a profile requirement item of the template, one of the following
46 values MUST be used in the “profiling” and “alignment” fields of the table:

- 47 ➤ **Not Applicable:** for items that is not relevant to the community.
48 ➤ **No Recommendation:** will indicate that there is no recommendation or requirement for this
49 feature item.
50 ➤ **Pending:** for items that are still under study for a recommendation, and for which some
51 recommendation is likely to be specified in future versions of the Deployment Profile (yet, the user
52 community did not want to wait for these to be specified before publishing a current version of the
53 Profile or Guide).

54

55 For items that specify text values, it should also be noted whether or not the values are case-sensitive.

56

57 2 Overview of the Profile

58 This profile is created from an input document that was originally created by Reliable Web Services
59 Messaging SIG in SPIA Forum. The SPIA Forum is a not-for-profit forum to standardize Service Platform
60 for Information Appliances. "The goal of this forum and the background of the activities are follows:

61

- To control the information appliances in home via Internet remotely, a back-end system to connect multiple services should be developed.
- Each service will be developed by different service provider with different development infrastructure. It is necessary to adopt standard reliable messaging technology for communication among services and realize interoperability to develop reliable systems with the above multiple services.
- Open standard specification should be used.

62
63
64



The reliable messaging protocol exists already. The following activities are required to develop skills and technologies for validating conformance and interoperability of the reliable messaging protocol.

- Implementation Profile
- Conformance Tool
- Proof-of-Concept

65
66
67
68

With the above background, the original profile was created. This document is a profile of WS-Reliability for information appliances.

69 2.1 General Objectives

70 This document is a profile of reliable Web Services messaging for information appliances. To create this
71 document, it was considered how we should use reliable Web Services Messaging as messaging
72 infrastructure for Web services that will communicate with information appliances. Especially the following
73 points were considered.

- 74 ➤ What functions of Reliable Web Services Messaging should be used?
- 75 ➤ How parameters for the functions should be decided?
- 76 ➤ How clarify the specification, when it does not specify detail?

77

78 The following figure shows the Use case of Reliable Web Services Messaging.

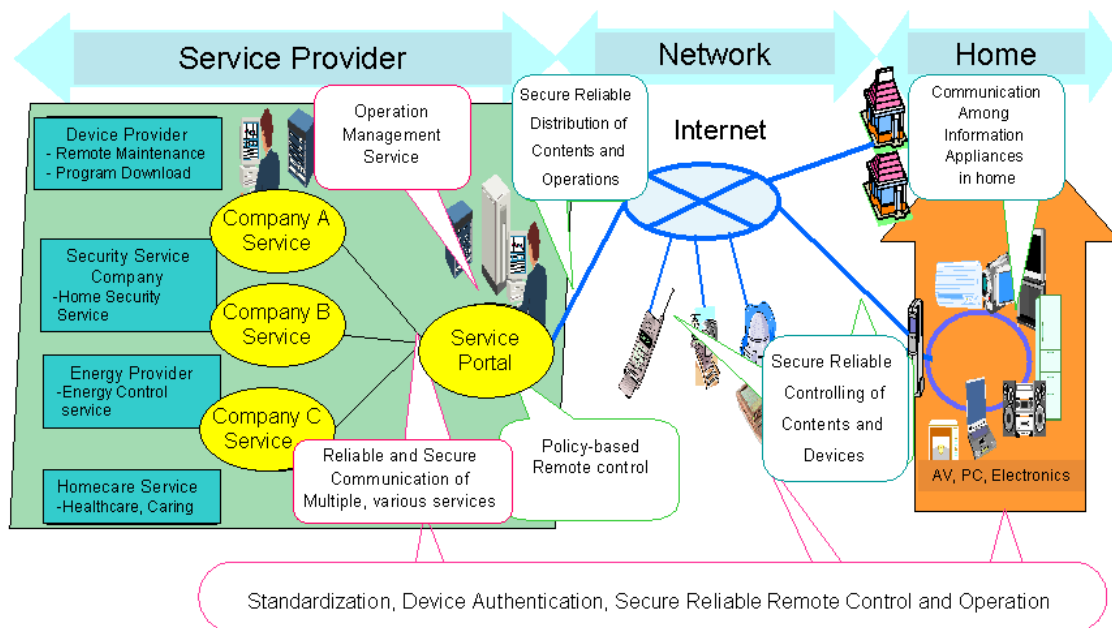


Figure 1 Use case of Reliable Web Services Messaging

79
80
81

2.2 Requirements

There are following major characteristics in Reliable Web Services Messaging.

- Reliable Messaging
- Asynchronous Messaging

This section describes requirements of Information Appliances for these characteristics, in terms of interoperability.

2.2.1 Reliable Messaging

2.2.1.1 Guaranteed Delivery Feature

Guaranteed Delivery of a message is considered as the most important feature for controlling home information appliances. Thus this feature will be required for many cases.

2.2.1.2 Duplicate Elimination Feature

When users control home Information Appliance remotely, each control operation should be sent exactly once, to make the operation similar to the direct operation. Thus, Duplicate Elimination feature should be used with Guaranteed Delivery Feature on such cases.

It is also useful to avoid double charge for paid service, even if in the situation that the human operation is not involved.

2.2.1.3 Message Ordering Feature

Message Ordering Feature is useful when you operate Information Appliances with a sequence of operations in order remotely. For synchronous messaging, it is OK when the operation request and its response are exchanged one by one in order. However, asynchronous messaging is useful in many cases to operate Information Appliances remotely as described in 1.2.2. Thus, Message Ordering is important for users to operate Information Appliances with a sequence of operations in order remotely.

104

105 2.2.2 Asynchronous Messaging

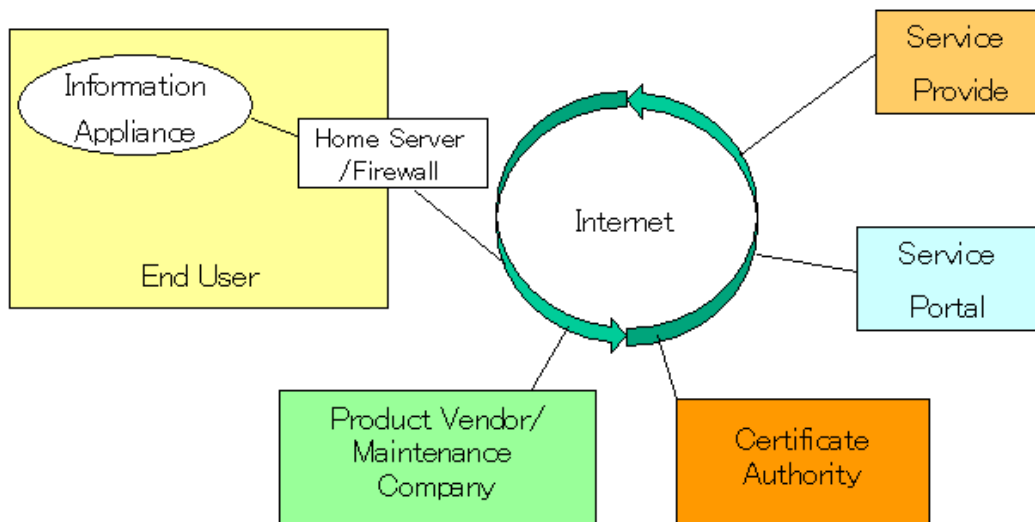
106 Assuming a service provider provides centralized Web Service that controls many Information Appliances.
107 In this case, response time will be slow down when server received overloaded access, especially when
108 the service includes authorization or heavy analysis. Synchronous message exchange is not efficient for
109 this case, since the user has to wait until the server process the request. In this case, asynchronous
110 messaging is more appropriate. It is possible to control Information Appliances reliably and
111 asynchronously, by choosing appropriate features of reliable messaging features i.e., guaranteed delivery
112 feature, duplicate message elimination feature, or message ordering feature for the situation.

113 2.3 Use cases to be supported

114 This section describes use case of Reliable Web Services messaging for Information Appliance Services.

115 2.3.1 Certificate Authority Model

116 This section describes Certificate Authority Model for registration of a home information appliances, and
117 remote operation service with Information Appliance Certificate Authorization by reliable Web Services
118 messaging.



119

120 *Figure 2 A Model of Certificate Authority for Information Appliance*

121

122 The components of this model are described below.

123

124

Chart 2

Component	Description
Information Appliances	A device with reliable Web services messaging feature and it is connected to the Internet. Note: To simplify the model, Information Appliances in this model have capability of reliable Web Services messaging functions. However this model may be diversified to a model including a central server to control Information Appliances in home. In such cases, the central server communicates with other services with

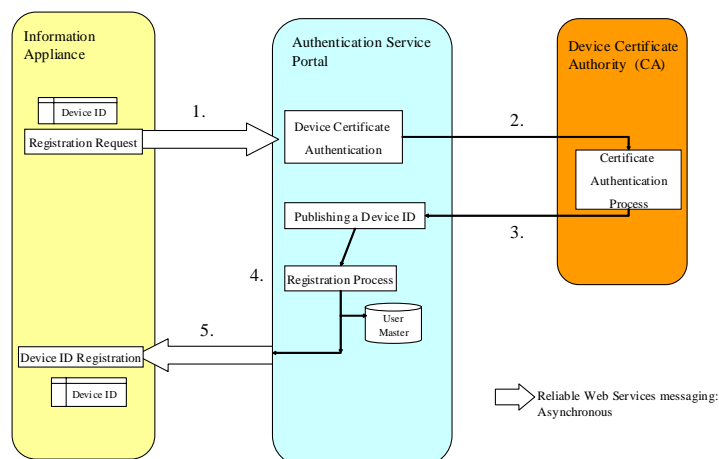
	reliable Web Services messaging.
User	A user that operate Information Appliances remotely. The user uses cellular phone with reliable Web Services messaging functions to control Information Appliances remotely. Note: To simplify the model, the cellular phone in this model has reliable Web Services functions. However this model may be diversified to a model including a reliable Web Services messaging server that is operated by cellular phone carrier takes care of reliable messaging for the cellular phone. In such cases, reliable Web Services messaging server communicates with other services with reliable Web Services messaging.
Service Provider	A company that provides services for user to operate Information Appliance remotely.
Service Portal	Service Portal authenticates the Information Appliances, and requests service portal for its services. To simplify a model, service provider and Service Portal are already trusted each other. It means this model omitted a process to establish the trust between service provider and Service Portal.
Certificate Authority(CA)	Publish a digital certificate that was requested by Service Portal, and authenticate the certificate.

125

126 **2.3.2 Use case: Registration and Operation of Information Appliances**

127 **2.3.2.1 Registration flow of information appliances**

128 The following figure shows an example for registration of information appliance to the service portal. This
129 information appliance will be controlled remotely after this registration.



130

131

132

133

Figure 3 Registration Flow of Information Appliance

Chart 3

	Operation	Message	Protocol
1.	A user requests registration of Information Appliance by Cellular phone.	Request for registration, Device ID (e.g., Serial Number), User information (e.g., Cellular unique ID)	Reliable Web Services Messaging One-WAY Guaranteed Delivery, Duplicate Elimination with asynchronous messaging
2.	The portal authenticates the device ID, and requests CA for Digital Certificate.	Request for Digital Certificate	(CA communication protocol)
3.	CA sends a Digital Certificate to the portal.	Digital Certificate	(CA communication protocol)
4.	Portal registers a combination of user ID and device ID to the user master file.		
5.	After registration, Portal sends Digital Certificate for the cellular as its ID. The Cellular saves it.	Digital Certificate	Reliable Web Services Messaging One-WAY Guaranteed Delivery, Duplicate Elimination with asynchronous messaging

- 134 (*) One-WAY: One-way messaging. This message exchange doesn't require response message.
135 Request-Response: This message exchange requires Response message to be returned for Request
136 message.
137

138 2.3.2.2 Operation Flow of registered Information Appliance

139 This section describes a use case that end-user that uses service provided by service provider operate
140 information appliance remotely. In this use case, the information appliance was registered in advance,
141 and end-user already registered himself/herself to the service provider. Note that registration process can
142 be described in the same fashion.

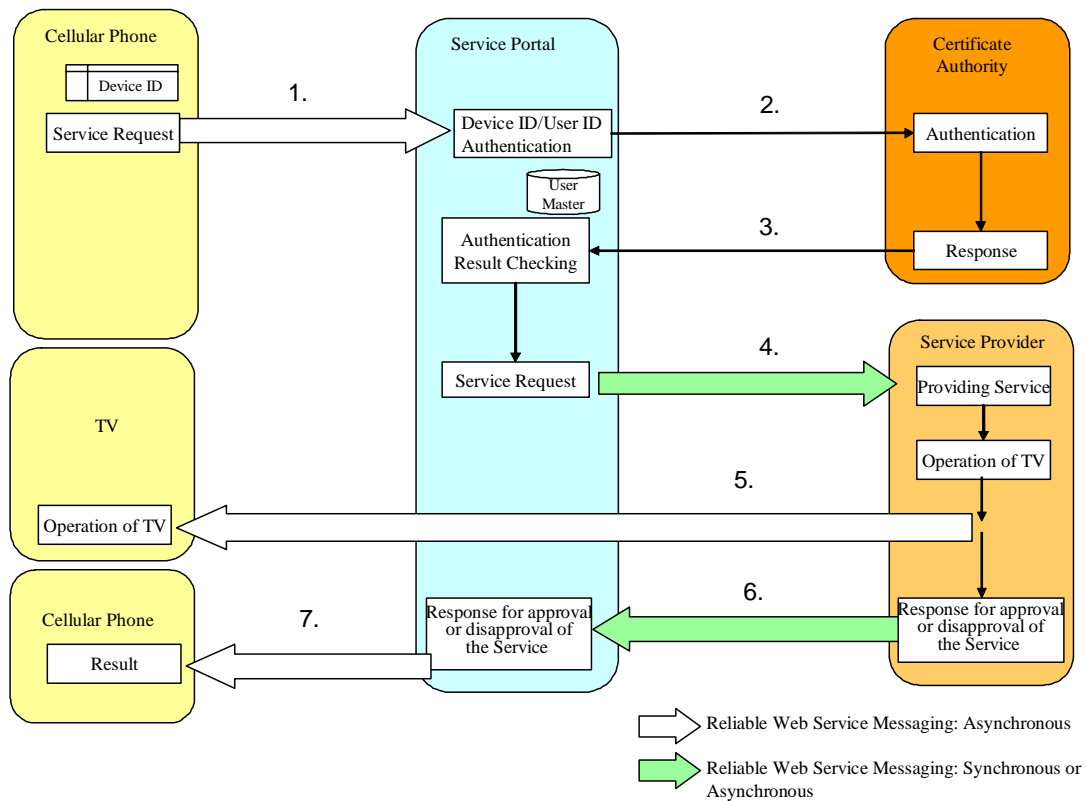


Figure 4 Operation Flow of Information Appliance

Chart 4

	Description	Message	Transport Protocol
1.	A user requests Service Portal for operation of Information Appliances by cellular phone. User information, e.g., Cellular phone serial ID, and device ID, e.g., certificate, that was received with the cellular phone registration process are also sent for authentication.	User Information, Device ID, Operation Request.	Reliable Web Services Messaging: One-WAY Guaranteed Delivery, Duplicate Elimination, Message Ordering with asynchronous Messaging.
2.	Service Portal requests Certificate Authority for the authentication of the device ID, i.e., Digital Certificate.	Digital Certification.	(CA communication protocol)
3.	Certificate Authority replies the authenticate result.	Authentication Result.	(CA communication protocol)
4.	Service Portal refers to the user master and request Service Provider with operation that was related to the user, when the	Device Information (Device ID, Device URI), Operation Request.	Reliable Web Services Messaging: Request-Response Guaranteed Delivery,

143
144
145
146

	authentication was OK.		Duplicate Elimination, Message Ordering with Asynchronous messaging (or Guaranteed Delivery with Synchronous messaging).
5.	Service Provider process the operation that was requested for the Information Appliance.	Operation of Information Appliance.	Reliable Web Services Messaging: One-WAY Guaranteed Delivery, Duplicate Elimination, Message Ordering with asynchronous Messaging.
6.	Service Provider approve or disapprove the service request, and send the result to the portal.	Response for approval or disapproval of the Service.	Reliable Web Services Messaging: Request-Response Guaranteed Delivery, Duplicate Elimination, Message Ordering with Asynchronous messaging (or Guaranteed Delivery with Synchronous messaging).
7.	Service Portal sends back a response for approval or disapproval of the service to the user cellular phone.	Response for approval or disapproval of the Service.	Reliable Web Services Messaging: One-WAY Guaranteed Delivery, Duplicate Elimination, Message Ordering with Asynchronous messaging.

147

148

149

2.3.2.3 Characteristics of reliable Web Services messaging in the use case of registration and operation for Information Appliances

150

➤ Asynchronous Messaging

151

In the following example, each user request goes to the Service Portal. And each Service Portal accesses to the Certificate Authority or Service Provider. Thus, the access peak to any particular server may cause delay when a lot of users access the server in a short time or these requests require a lot of server resources. Asynchronous reliable Web Services messaging between user and Service Portal will solve this issue, since sender don't have to wait after sending a message, and queuing mechanism helps to decrease load at the receiver.

155

156

157

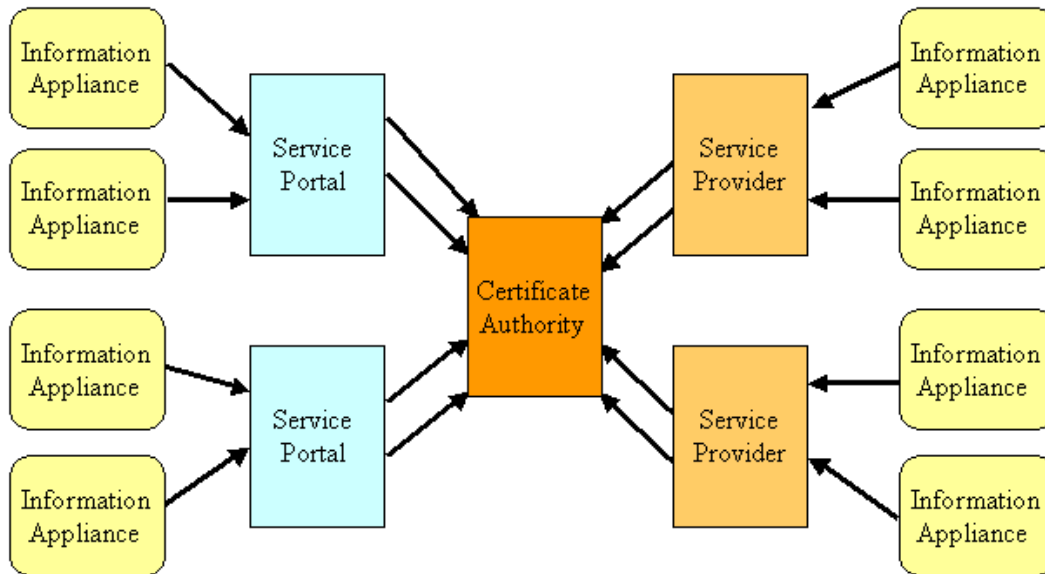


Figure 5 Example of access concentration

158
159
160
161
162
163
164
165
166
167
168
169

➤ Guaranteed Delivery

Guaranteed Delivery is always used to make the operation of Information Appliances reliable.

➤ Duplicate Elimination, Message Ordering

Many operations of an Information Appliance are based on a sequence of operations. There is also a case that the repeat of the same operation has special meanings. It is possible to eliminate duplicate message and to guarantee message ordering with asynchronous messaging by reliable Web Services messaging.

2.4 Required Functions of WS-Reliability

2.4.1 Three RM-Reply Patterns

WS-Reliability defines three RM-Reply patterns for Acknowledgment Indication or Fault Indication.

- 1) Response RM-Reply Pattern
- 2) Callback RM-Reply Pattern
- 3) Poll RM-Reply Pattern (Synchronous/Asynchronous)

176

177 With Response RM-Reply Pattern, a Request message is carried on a HTTP Request, and an RM-Reply
178 message (e.g., Acknowledgment or fault) is carried on a HTTP Response. A pair of HTTP Request and
179 HTTP Response will be used for this messages exchange pattern. It causes timeout at the sending side,
180 when the receiving side takes time to send back the response message.

181 With Callback RM-Reply Pattern, a Request message is carried on a HTTP Request, and the HTTP
182 Response will be returned with no RM-Reply message. The RM-Reply message is carried on a HTTP
183 Request from the message receiver to the sender. Two pairs of HTTP Request and HTTP Response will
184 be used for this messages exchange pattern. Sender is not affected by the processing status on the
185 receiver side.

186 With Poll RM-Reply Pattern, a Request message is carried on a HTTP Request, and the HTTP Response
 187 will be returned with no RM-Reply message. Then the sender of the message sends a PollRequest
 188 message on the HTTP Request to retrieve RM-Reply from the receiver. The RM-Reply will be sent on
 189 whether HTTP Response for Synchronous messaging or HTTP Request to the sender for Asynchronous
 190 messaging. There are not many cases that Poll RM-Reply Pattern is required for Information Appliances.
 191

192 **2.4.2 Required Functions for Information Appliances**

193 WS-Reliability defines reliable Web Services messaging functions that was described in section 1.2.1.
 194 The following chart shows the functions that Information Appliances requires.

195
 196

Chart 5 Functions that Information Appliances will require

R...Required for most cases O...May be required for some conditions

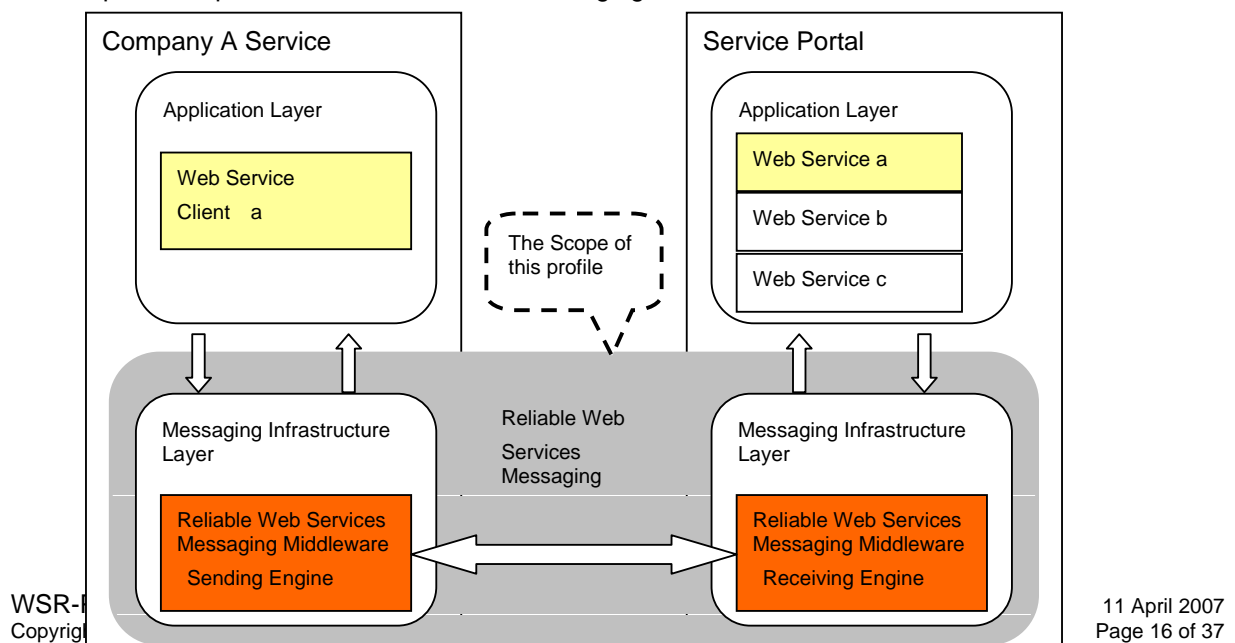
Feature \ ACK Message Exchange Pattern	Response RM-Reply	Callback RM-Reply	Poll RM-Reply(*3)
Guaranteed Delivery	R	R	-
Duplicate Elimination (*1)	R	R	-
Message Ordering(*2)	O	O	-

197
 198 (*1) This is especially required for charging fee to the information.
 199 (*2) This is required for controlling appliances with some sequence.
 200 (*3) This profile doesn't assume to use Poll RM-Reply. Refer to section 2.2.7 for detail.
 201

202 **2.5 The Scope of this profile**

203 The scope of this profile is described in the following figure.

204
 205
 206
 207
 208
 209
 210
 211
 212
 213
 214
 215
 216
 217



218
219

Figure 6 Scope of this profile

220 2.5.1 Messaging Infrastructure Layer

221 Reliable Web Services messaging standard protocol WS-Reliability specification is adopted.
222 Interoperability of reliable Web Services messaging is realized by middleware software for reliable Web
223 Services messaging.
224

225 2.5.2 Application Layer

226 It is vertical application, i.e., Web Services, to use reliable Web Services messaging.
227 This profile is to realize interoperability for reliable Web Services messaging, i.e., WS-Reliability, on the
228 messaging infrastructure layer described above.
229

230 2.6 Recommendation of this profile

231 This profile defines three level of recommendation as described below.

- 232 1. [REQUIRED]: Mandatory. The element or attribute marked [REQUIRED] is required to realize
233 interoperability for Information Appliances, even if the WS-Reliability specification defines it as
234 optional.
- 235 2. [RECOMMENDED]: Strongly recommended. The element or attribute marked [RECOMMENDED]
236 is strongly recommended to use for Information Appliances.
- 237 3. Others: No recommendation. This profile does not define any recommendation for some
238 elements or attributes, if those items has no indication of [REQUIRED] or [RECOMMENDED]
239 described above. These items may or may not be used in Implementation, though these items
240 may be useful to realize interoperability.
241

242 2.7 Anticipated Readers of this document

243 This following audience is expected for this profile.

- 244 1. Application Developer, Systems Architecture, Systems Operator
- 245 2. Developer of Reliable Web Services Messaging Middleware (WS-Reliability)
- 246

247

3 Profiling the Functional Areas of WS-Reliability

248

In this section, users will only specify which functions or parts of the source specification are used in this profile (i.e. parts that business partners need to use or support in order to comply with the profile and communicate with others who do comply). For each part, users also specify whether the part has been profiled or not. If yes, some profiling details should be given for this part in section 3 or 4.

249

250

251

252

253

NOTE: Several of the profiling points below are expected to be not under user control, but under RMP developer control. In other words, they may already be determined by the implementation being used. In this case, the profiling tables in this document may still be used to report these constraints, in addition to expressing users' profiling choices. Doing so will provide guidance on which RMP should be deployed in order to conform to this profile.

254

255

256

257

258

259

3.1 Guaranteed Delivery Function

Module Name and Reference	Guaranteed Delivery Module (Sections 3.1.2, 3.2.1)
Profiling Status	Usage: required Profiled: yes
Notes	It is recommended to use Guaranteed Delivery all the time, since this is basic feature of reliable Web Services messaging, and it is useful for controlling Information Appliance in many cases. [REQUIRED] The application layer doesn't have to implement the same feature if the infrastructure layer supports this function.

260

261

3.2 Duplicate Elimination Function

Module Name and Reference	Duplicate Elimination Module (Sections 3.1.2, 3.2.2)
Profiling Status	Usage: required Profiled: yes
Notes	It is preferable that one remote operation for Information Appliances causes exactly one message sending, when the remote operation simulates direct operation. In such cases, Duplicate Elimination function should be used with Guaranteed Delivery. It is recommended to use Duplicate Elimination all the time, since this is a basic function for reliable Web Services messaging in the infrastructure layer. [REQUIRED] The application layer doesn't have to implement the same feature if the infrastructure layer supports this function.

262

Module Name and Reference	Monitoring Time for Duplicate Elimination, Duplicate Elimination Module (Sections 3.1.2, 3.2.2)
Profiling Status	Usage: optional Profiled: no
Notes	The WS-Reliability specification allows to use any value with the specified type. However it is recommended to define reasonable fixed value for each Information Appliance, each system, each service, or each industry to help interoperability. [RECOMMENDED]

263

264 3.3 Message Ordering Function

Module Name and Reference	Message Ordering Module (Sections 3.1.2, 3.2.3)
Profiling Status	Usage: optional Profiled: yes
Notes	Synchronous messaging realizes message ordering, when the operation request and operation response for Information Appliance were processed one by one sequentially. However, synchronous messaging is not effective when a system is overloaded. Asynchronous messaging is required for such a case. And it is recommended to use Message Ordering feature with asynchronous messaging, when a series of control messages should be processed in order. [RECOMMENDED] The application layer doesn't have to implement the same feature if the infrastructure layer supports this function.

265

266 3.4 Synchronous/Asynchronous Messaging

Module Name and Reference	Synchronous/Asynchronous Messaging Module
Profiling Status	Usage: optional Profiled: no
Notes	Choosing synchronous messaging or asynchronous messaging for the communication between application and reliable Web Services messaging middleware depends on the application and system scale. It is recommended to choose asynchronous messaging, when it is expected to be overload with the system. Asynchronous messaging helps to decrease the system load with parallel processing or asynchronous processing. One or more feature may be chosen from Guaranteed Delivery, Duplicate Elimination, or Message Ordering appropriately. Thus, it realizes reliable controlling for Information Appliances asynchronously.

267 **3.5 Response RM-Reply Pattern**

Module Name and Reference	Response RM-Reply Module (Sections 6.1)
Profiling Status	Usage: optional Profiled: yes
Notes	It is recommended to use this pattern, when a sender, i.e., user device to send operation request, or Information Appliances, and receiver, i.e., authentication services, Information Appliances controlling services, exchanges message bi-directionally. This should be used for relatively light-weight message exchange, especially for receiver side, e.g., sender sends information request, and receiver send back the requested information synchronously. [RECOMMENDED]

268

269 **3.6 Callback RM-Reply Pattern**

Module Name and Reference	Callback RM-Reply Module (Sections 6.2)
Profiling Status	Usage: optional Profiled: yes
Notes	It is recommended to use this pattern, when a sender, i.e., user device to send operation request, or Information Appliances, and receiver, i.e., authentication services, Information Appliances controlling services, exchanges message in one direction. This is valid for relatively heavy-weight message exchange, especially for receiver side, e.g., sender sends remote controlling request, and receiver send back the requested remote controlling service synchronously.

270

271 **3.7 Poll RM-Reply Pattern**

Module Name and Reference	Poll RM-Reply Module (Sections 6.3)
Profiling Status	Usage: never used in this profile Profiled: yes
Notes	This is mainly for pull messaging. It will not be used much for controlling Information Appliance.

272

273 **3.8 ExpiryTime**

Module Name and Reference	ExpiryTime (Sections 3.1.2,)
Profiling Status	Usage: optional Profiled: yes
Notes	It is recommended that each Information Appliance, each system, each service, or each industry, to define a static value to improve interoperability, although the spec allows any value with specified type.

274

275 **3.9 GroupExpiryTime, GroupMaxIdleDuration**

Module Name and Reference	GroupExpiryTime, GroupMaxIdleDuration (Section 3.1.2,)
Profiling Status	Usage: optional Profiled: yes
Notes	It is recommended that each Information Appliance, each system, each service, or each industry, to define a static value to improve interoperability, although the spec allows any value with specified type.

276

277 **3.10 Sequence and Message Management**

Module Name and Reference	Sequence and Message Management (sections 4.2.1, 4.2.2, 5)
Profiling Status	Usage: never used in this profile Profiled: no
Notes	There is no indicates how/when sequences are created, and how they are terminated, in this deployment profile.

278

279 **3.11 Schema Extensions**

Module Name and Reference	Schema Extensions (section 4.6)
Profiling Status	Usage: never used in this profile Profiled: no
Notes	There is no Indicates if/when schema extensions are being used.

280

281 **4 Profile Requirements Details**

282 **4.1 Profile Module: Delivery Assurances and Parameters**

283 **4.1.1 Profile Element: Usage of At-Least-Once**

Specification Feature	In message Header: /SOAP:Header/wsrn:Request/AckRequested
Specification Reference	WS-Reliability 1.1, sections 4.2.4
Profile Item(a) (AckRequested)	Is this reliability feature required? It is recommended to use this element always. [REQUIRED]
Alignment	[Is there any user-defined document this profile element should align to?]
Test References	N/A
Notes	Describe any mechanisms whereby the user of the deployed implementation may exercise control of resending behavior. N/A

284

285 **4.1.2 Profile Element: Acknowledgment Management**

Specification Feature	In message Header: /SOAP:Header/wsrn:Request/ReplyPattern/Value /SOAP:Header/wsrn:Request/ReplyPattern/ReplyTo /SOAP:Header/wsrn:Request/ReplyPattern/ReplyTo@reference-scheme /SOAP:Header/wsrn:Request/ReplyPattern/ReplyTo/BareURI
Specification Reference	WS-Reliability 1.1, section 4.2.3
Profile Item (a) (ReplyPattern value)	What are the expected values for the Reply pattern? (response/callback/poll) Only Response or Callback should be used. [RECOMMENDED]
Profile Item (b) (Acknowledgments)	May the SequenceReplies batch the acknowledgments? What are the acceptable delays to get acknowledgments? N/A

Profile Item (c)	In case of Polling, how often should the polling take place? What should be the target of the polling: range? Specific message IDs? N/A
Profile Item (d) (ReplyTo address)	Is the destination of acknowledgments, the sending RMP or a third party destination? What is the format or schema used by ReplyTo (reference-schema)? N/A
Alignment	N/A
Test References	N/A
Notes	It is recommended to use BareURI element and NOT to use @reference-schema attribute. [REQUIRED]

286

287 4.1.3 Profile Element: Usage of At-Most-Once

Specification Feature	Header elements: /SOAP:Header/wsrn:Request/DuplicateElimination
Specification Reference	WS-Reliability 1.1, section 4.2.5
Profile Item (a)	Is this reliability feature required? This element is mandatory for asynchronous messaging. [REQUIRED]
Alignment	N/A
Test References	N/A
Notes	N/A

288

289 4.1.4 Profile Element: Usage of In-Order

Specification Feature	Header elements: /SOAP:Header/wsrn:Request/MessageOrder
Specification Reference	WS-Reliability 1.1, section 4.2.6

Profile Item (a)	Is this reliability feature required? N/A
Profile Item (b)	How long should the receiving RMP wait for a missing message, before aborting an incomplete sequence? N/A
Alignment	N/A
Test References	N/A
Notes	N/A

290

291 4.1.5 Profile Element: Usage of Polling

Specification Feature	Header elements: /SOAP:Header/wsrn:PollRequest /SOAP:Header/wsrn:PollRequest/ReplyTo /SOAP:Header/wsrn:PollRequest/ReplyTo@reference-scheme /SOAP:Header/wsrn:PollRequest/ReplyTo/BareURI /SOAP:Header/wsrn:PollRequest/RefToMessageIds /SOAP:Header/wsrn:PollRequest/RefToMessageIds@groupid /SOAP:Header/wsrn:PollRequest/RefToMessageIds/SequenceNumRange /SOAP:Header/wsrn:PollRequest/RefToMessageIds/SequenceNumRange@from /SOAP:Header/wsrn:PollRequest/RefToMessageIds/SequenceNumRange@to /SOAP:Header/wsrn:PollRequest/[wsrn:HeaderBaseType]
Specification Reference	WS-Reliability 1.1, section 4.3
Profile Item (a)	Is this feature expected to be used, and under which conditions? It is recommended NOT to use PollRequest element. It is considered that there are not many cases that that Poll RM-Reply is required in Information Appliances, as described previous section. This profile recommends an implementation not to use Poll RM-Reply. [RECOMMENDED] The description regarding Poll RM-Reply pattern are described for the case the Poll RM-Reply is in use.
Profile Item (b) (sync/async)	Is the Polling expecting a synchronous response, or asynchronous? If asynchronous: destination of acknowledgments, the sending RMP or a third party destination? What is the format or schema used by ReplyTo (reference-scheme)?

	N/A
Profile Item (c)	How often is polling expected to be done? Time period, or based on number of messages received? N/A
Profile Item (d)	Should a particular extension be supported and understood (schema?) What is its semantics? N/A
Alignment	N/A
Test References	N/A
Notes	It is recommended NOT to use @reference-schema attribute. It is recommended to use BareURI element. [RECOMMENDED] RefToMessageIds: It is recommended to use single RefToMessageIds element for the child element of PollRequest. Because multiple group cause to increase complexity. [RECOMMENDED] @groupId: It is recommended to create unique URI value with a combination of industry defined URI and product or service specific ID, e.g., ID diversified from a product serial ID for the device, although the spec allows any URI value. [RECOMMENDED] SequenceNumRange: It is recommended NOT to use this element, i.e., Receiving RMP sends back RM-Reply always for received or faulted and non-expired message for the group. [REQUIRED]

292

293 4.2 Profile Module: Sequence and Message Management

294 4.2.1 Profile Element: General Use of Sequences

Specification Feature	Header elements: /SOAP:Header/wsrn:Request/MessageId /SOAP:Header/wsrn:Request/MessageId/SequenceNum /SOAP:Header/wsrn:Request/MessageId/SequenceNum@number /SOAP:Header/wsrn:Request/MessageId/SequenceNum@last /SOAP:Header/wsrn:Request/MessageId/SequenceNum@groupExpiryTime /SOAP:Header/wsrn:Request/MessageId/SequenceNum@groupMaxIdleDuration /SOAP:Header/wsrn:Response/NonSequenceReply /SOAP:Header/wsrn:Response/NonSequenceReply@groupId /SOAP:Header/wsrn:Response/NonSequenceReply@fault /SOAP:Header/wsrn:Response/SequenceReplies
-----------------------	--

	<p>/SOAP:Header/wsrn:Response/SequenceReplies@groupId</p> <p>/SOAP:Header/wsrn:Response/SequenceReplies/ReplyRange</p> <p>/SOAP:Header/wsrn:Response/SequenceReplies/ReplyRange@from</p> <p>/SOAP:Header/wsrn:Response/SequenceReplies/ReplyRange@to</p> <p>/SOAP:Header/wsrn:Response/SequenceReplies/ReplyRange@fault</p>
Specification Reference	WS-Reliability 1.1, section 4.2.1, and 4.4
Profile Item (a) (message groups)	<p>May or must groups contain a single message, i.e. no sequence number is used? Or should they always use sequence numbers?</p> <p>N/A</p>
Profile Item (b)	<p>(if sequences are used)</p> <p>Any rule governing when sequences should be started?</p> <p>N/A</p>
Profile Item (c)	<p>(if sequences are used)</p> <p>Should sequences map to a particular sequence of business messages, or should a sequence just be associated with a particular reliability level, usable by any message requiring this level?</p> <p>N/A</p>
Profile Item (d)	<p>(if sequences are used)</p> <p>/SOAP:Header/wsrn:Request/MessageId/SequenceNum@groupExpiryTime</p> <p>Sequence termination: Under which conditions must or may sequence expiration be used? (any maximum duration, or rule to determine the maximum duration?)</p> <p>It is recommended that each Information Appliance, each system, each service, or each industry, to define a static value to improve interoperability, although the spec allows any value with specified type. [REQUIRED]</p> <p>The spec defines that this is exclusive with @groupMaxIdleDuration in a group. One of these two should be chosen among service providers. [REQUIRED]</p> <p>However, implementation of WS-Reliability should be able to support both. [REQUIRED]</p> <p>It is recommended to use appropriate value for each service. [REQUIRED]</p>
Profile Item (e)	<p>(if sequences are used)</p> <p>/SOAP:Header/wsrn:Request/MessageId/SequenceNum@groupMaxIdleDuration</p> <p>Sequence termination: Under which conditions must or may termination by maximum idle time between two messages be used? (is there a maximum idle time known in advance?)</p> <p>It is recommended that each Information Appliance, each system, each service, or each industry, to define a static value to improve interoperability, although the spec allows any value with specified type. [REQUIRED]</p> <p>The spec defines that this is exclusive with @groupExpiryTime in a group. One</p>

	<p>of these two should be chosen among service providers. [REQUIRED]</p> <p>However, implementation of WS-Reliability should be able to support both. [REQUIRED]</p> <p>It is recommended to use appropriate value for each service. [REQUIRED]</p>
Profile Item (f)	<p>(if sequences are used)</p> <p>/SOAP:Header/wsrn:Request/MessageId/SequenceNum@last</p> <p>Sequence termination: Under which conditions must or may last message marker be used ? (any known application message should signal the end of a reliable sequence?)</p> <p>There must not be two or more MessageId element with the value of this attribute "true " in a group. [REQUIRED]</p> <p>There must not be a MessageId with larger value in number attribute, than MessageId with last attribute with "true".[REQUIRED]</p> <p>Use of this attribute: Sender has to use this attribute when it can decide the last message of a group for the service. [RECOMMENDED]</p> <p>However, receiver should not expect this value is used always. [REQUIRED]</p> <p>Value of this attribute: The value should be "true", when it is the last message of a group. Otherwise the value should be "false", which is the default value. [RECOMMENDED]</p>
Alignment	N/A
Test References	N/A
Notes	N/A

295

296 **4.2.2 Profile Element: Message Details**

Specification Feature	<p>Header elements:</p> <p>/SOAP:Header/wsrn:Request/MessageId@groupId</p> <p>/SOAP:Header/wsrn:Request/ExpiryTime</p>
Specification Reference	Sections 4.2.1.1, and 4.2.2.
Profile Item (a)	<p>(if sequences are used)</p> <p>What is the format of a groupId?</p> <p>It is recommended to create unique URI value with a combination of industry defined URI and product or service specific ID, e.g., ID diversified from a product serial ID for the device, although the spec allows any URI value. [RECOMMENDED]</p>
Profile Item (b)	<p>(if sequences are used)</p> <p>Is there any limit on the maximum sequence number?</p> <p>N/A</p>

Profile Item (c)	Is there any requirement or recommendation on the message expiration time? N/A
Alignment	N/A
Test References	N/A
Notes	ExpiryTime: It is recommended to use appropriate value for each service. [REQUIRED]

297

298 4.3 Profile Module: Schema Extensions

299 4.3.1 Profile Element: Extensions to wsr:Request

Specification Feature	Header elements: /SOAP:Header/wsr:Request/[wsrm:HeaderBaseType]
Specification Reference	Section 4.6
Profile item (a)	Should a particular extension be supported and understood (schema?) N/A
Profile item (b)	What is the semantics of this extension, when may/should/must it be used? N/A
Alignment	N/A
Test References	N/A
Notes	N/A

300

301 4.3.2 Profile Element: Extensions to wsr:Response

Specification Feature	Header elements: /SOAP:Header/wsr:Response/[wsrm:HeaderBaseType] /SOAP:Header/wsr:Response/NonSequenceReply/[wsrm:ExtensibleType] /SOAP:Header/wsr:Response/SequenceReplies/[wsrm:ExtensibleType] /SOAP:Header/wsr:Response/SequenceReplies/ReplyRange/[wsrm:ExtensibleType]
Specification Reference	Section 4.6

Profile item (a)	Should a particular extension be supported and understood as child of Response (schema?) What is the semantics of this extension, when may/should/must it be used? N/A
Profile item (b)	Should a particular extension be supported and understood as child of NonSequenceReply (schema?) What is the semantics of this extension, when may/should/must it be used? N/A
Profile item (c)	Should a particular extension be supported and understood as child of SequenceReplies (schema?) What is the semantics of this extension, when may/should/must it be used? N/A
Profile item (d)	Should a particular extension be supported and understood as child of SequenceReplies/ReplyRange (schema?) What is the semantics of this extension, when may/should/must it be used? N/A
Alignment	N/A
Test References	N/A
Notes	@groupId: It is recommended to create unique URI value with a combination of industry defined URI and product or service specific ID, e.g., ID diversified from a product serial ID for the device, although the spec allows any URI value. [RECOMMENDED]

302

303 4.4 Profile Module: SOAP and Transport Bindings

304 4.4.1 Profile Element: SOAP Version

Specification Feature	SOAP envelope and namespace
Specification Reference	Section 6
Profile item (a)	Which version of SOAP is used? (1.1 vs 1.2). Should both be supported? N/A
Alignment	N/A
Test References	N/A
Notes	N/A

305

306 **4.4.2 Profile Element: Transport Protocol**

Specification Feature	Transport binding
Specification Reference	Section 6
Profile item (a)	Is HTTP a required or allowed transfer protocol? N/A
Profile item (b)	Is HTTPS a required or allowed transfer protocol? N/A
Profile item (c)	Is any other transfer protocol allowed or required? If so, describe the protocol binding to be used. N/A
Alignment	N/A
Test References	N/A
Notes	N/A

307

308 **4.5 Profile Module: RM Agreement**

309 **4.5.1 Profile Element: Use of RM Agreements**

Specification Feature	RM Agreements
Specification Reference	Section 3
Profiling (a)	Are RM agreements being used for describing the reliability QoS capability of a receiving endpoint, regardless of the sender and of the sequences that can be initiated by senders? N/A
Profiling (b)	Are RM agreements being used for describing the reliability QoS agreement between two parties? N/A
Profiling (c)	Are RM Agreements used to configure only the sending endpoints, all QoS properties being transmitted via the reliability protocol? N/A
Alignment	N/A
Test References	N/A

Notes	N/A
-------	-----

310

311 **4.5.2 Profile Element: Format**

Specification Feature	RM Agreements
Specification Reference	Section 3
Profiling (a)	Is any particular representation required for RM agreements? N/A
Alignment	N/A
Test References	N/A
Notes	N/A

312 5 Operational Aspect of the Profile

313 This section defines the operational aspect of the profile: type of deployment that the above profile is
314 supposed to be operated with, expected or required conditions of operations, usage context, etc.

315

316 5.1 Deployment and Processing requirements for RM Agreements

RM Agreement	Profile requirements
Is a specific registry for storing and accessing RM Agreements required? If so, provide details.	N/A
Is there a set of predefined RM Agreements?	N/A
Is there a particular procedure for creating and deploying new RM Agreements? Who is the authoritative instance for validating/authorizing?	N/A
Others	N/A

317

318 5.2 Message Payload and Flow Profile

Message Quantitative Aspects	Profile requirements
What are typical and maximum message payload sizes that must be handled? (maximum, average)	N/A
What is the expected throughput and processing capabilities of an RMP?	N/A
Expected Volume of Message flow (throughput): maximum (peak), average?	N/A
Others	N/A

319

320 5.3 Additional Reliability Features beyond WS-Reliability Specification

Additional Features	Profile requirements
Are there additional reliability features out of specification scope, that are part of this profile, as an extension to the WS-Reliability profiling?	N/A

321

322 **5.4 Profile Management**

Profile Management	Profile requirements
Operational or deployment aspects that are related to the management of this profile, for example: <ul style="list-style-type: none">➤ Profile location.➤ Profile validation authority and procedure.➤ Testing material available and usage.➤ Procedure for updating this profile or deriving variants from this profile.	Recommended or required practices. N/A

323

324 **5.5 Attachments**

Additional Requirements	Profile requirements
Should implementation of WS-Reliability support attachments?	Implementation of WS-Reliability may support Attachments. Even if the implementation doesn't support attachments, it should not cause system failure when it received a message with attachments. [REQUIRED] It should be clarified in the application guideline how to deal with attachments. [REQUIRED]

325

326

327 **6 References**

328 **6.1 Normative References**

- 329 **[RFC2119]** S. Bradner, *Key words for use in RFCs to Indicate Requirement Levels*,
330 <http://www.ietf.org/rfc/rfc2119.txt>, IETF RFC 2119, March 1997.
- 331 **[WS-Reliability]** Kazunori Iwasa, et al, eds., *Web Services Reliability 1.1*, [http://docs.oasis-](http://docs.oasis-open.org/wsrn/ws-reliability/v1.1/wsrn-ws_reliability-1.1-spec-os.pdf)
332 [open.org/wsrn/ws-reliability/v1.1/wsrn-ws_reliability-1.1-spec-os.pdf](http://docs.oasis-open.org/wsrn/ws-reliability/v1.1/wsrn-ws_reliability-1.1-spec-os.pdf), OASIS
333 Standard, 15 November 2004.
- 334

335 **A. Acknowledgements**

336 The following individuals are voting members of the TC during the creation of this specification and are
337 gratefully acknowledged:

338 **Participants:**

339 Jacques Durand, Fujitsu

340 Kazunori Iwasa, Fujitsu

341 Tom Rutt, Fujitsu

342 Robert Freund, Hitachi

343 Eisaku Nishiyama, Hitachi

344 Nobuyuki Yamamoto, Hitachi

345 Paul Knight, Nortel Networks

346 Pete Wenzel, Sun Microsystems

347 The following organization contributed an input document for this profile and it is greatly appreciated:

348 Reliable Web Services Messaging SIG, SPIA Forum

B. Revision History

Revision	Date	Editor	Changes Made
01	March 28, 2007	Kazunori Iwasa	Initial document
02	April 2, 2007	Kazunori Iwasa	<p>Format is aligned with the Deployment Profile Template for WS-Reliability dated on 2 April 2007. The changes are follows:</p> <p>Editorial corrections for WS-Reliability references, Specification URI on the first page, Document Identifier in the every page (footer),</p> <p>Added the followings:</p> <p>For Section 4.1.5: /SOAP:Header/wsrn:PollRequest/RefToMessageIds/SequenceNumRange@from /SOAP:Header/wsrn:PollRequest/RefToMessageIds/SequenceNumRange@to</p> <p>For Section 4.2.1: /SOAP:Header/wsrn:Request/MessageId/SequenceNum@number /SOAP:Header/wsrn:Response/NonSequenceReply /SOAP:Header/wsrn:Response/NonSequenceReply@groupId /SOAP:Header/wsrn:Response/NonSequenceReply@fault /SOAP:Header/wsrn:Response/SequenceReplies /SOAP:Header/wsrn:Response/SequenceReplies@groupId /SOAP:Header/wsrn:Response/SequenceReplies/ReplyRange /SOAP:Header/wsrn:Response/SequenceReplies/ReplyRange@from /SOAP:Header/wsrn:Response/SequenceReplies/ReplyRange@to /SOAP:Header/wsrn:Response/SequenceReplies/ReplyRange@fault</p> <p>Removed the following from 4.2.1: /SOAP:Header/wsrn:Request/MessageId@groupId</p> <p>and other minor editorial updates.</p>
03	5 April, 2007	Iwasa	<p>The following updates were incorporated:</p> <ul style="list-style-type: none"> - Updating the first page and footer. - The following sentence was added just after the sentence mentioning SPIA Forum first (line 62 just after "in SPIA Forum."): <p>"The SPIA Forum is a not-for-profit forum to standardize Service Platform for Information Appliances."</p> - A sentence starting "(*) One-WAY:" at line 136 in 2.3.2 "Use case: Registration and Operation ..." just before Chart 3 was moved just after Chart 3. - The following sentence in 218: <p>"The scope of this profile is described in Figure1.5."</p> was replaced with:

			<p>"The scope of this profile is described in the following figure."</p> <ul style="list-style-type: none"> - The two N/As and those columns from the table in section5.4 were removed. And "N/A" was added to the right column just after "Recommended or required practices." - The entire 6.2 section was removed. - "[RFC2119]." was added at the end of line 25. - The Profile Item (b) column in 306 at 4.1.1 and the texts inside the column were removed. And the following text to the right column of "Notes" in the table in Line306 at 4.1.1 was added: "You may describe if there is any other requirement (e.g., Number of retries, Interval between retries, and others)." - The Profile Item (b) column in 310 at 4.1.3 and the texts inside the column were removed.
04	9 April, 2007	Iwasa	<p>The following updates were incorporated:</p> <ul style="list-style-type: none"> - Updating the first page and footer. - The following text was added to the right column of "Notes" in the table in Line306 at 4.1.1, and the previous description was removed: "Describe any mechanisms whereby the user of the deployed implementation may exercise control of resending behavior." - The Profile Item (b) column in 310 at 4.1.3 was updated with the following texts: " Which of the following statements describes the behavior of the implementation of a receiving RMP when a duplicate request message, which requires a response, is received: 1) an application fault is always sent as response to the duplicate message 2) a limited cache of sent responses is used to allow resend of the prior response, when this cache is exhausted, an application fault is sent in response to duplicate message 3) all sent responses are cached until the expiry time for the original request message 4) other - please describe an alternative behavior regarding the response sent after receipt of duplicate response N/A " - Two blank columns in section5.3 are removed. - Section2.6: Changed as follows: L1 -> Required, L2 -> Recommended.
CD	11 April, 2007	Iwasa	<p>The Profile Item (b) columns at 4.1.3 were removed. The first page, footer were updated for Committee Draft. Japanese Fonts are removed also. Greatly appreciated to Pete Wenzel for his help for doing this.</p>

351
352