



Waseda Vision 150

(Information Security)



President Kaoru Kamata

November 1, 2016

*A International Conference on Cyber Threat Intelligence
Information Sharing Strategies, Tactics and Practice, at Keio University*



History:

1882 Tokyo Senmon Gakko (College) founded by Shigenobu Okuma with the Departments of Political Science, Law, English, and Physical Science.

Mission:

- Independence of Learning
- Practical Utilization of Knowledge
- Good Citizenship



Facts(2016):

51,129 Students 42,860 Undergraduates/8,269 Postgraduates

ADMISSIONS 108,039 Applications

FINANCIAL ASSISTANCE Total Amount: JPY 12.4 Billion (US\$ 110 Million) Recipients: 17,614

Faculty: 5,503 (Full-time: 2,176 Part-time: 3,327) **Staff: 1,280** (Full-time: 1,144 Part-time: 136)

ALUMNI: Over 600,000 Living Alumni

FINANCES: Income: JPY 104 Billion (US\$ 937 Million) Expenses: JPY 96 Billion (US\$ 855 Million)

LAND AREA: Owned Land Area: 2.1 Million square meters (522 acres)

LIBRARIES: Holdings: 5.7 Million Books 54,000 Serials

External Funds for Research Projects: 1968 Total: JPY 8.3 Billion (US\$ 74 Million)

INTERNATIONAL STUDENT ENROLLMENT: 4,594 Students (with Student visa)



Mission

- 1. **Independence of Learning**—Principle on which Contribution to the World is Made
- 2. **Practical Utilization of Knowledge**—Ways and Means of Contributing to the World
- 3. **Creation of Good Citizenship**—People Contributing to the World



Vision

<Education and Research Vision>

- 1. **Students of the Highest Caliber and Character Who Show Promise in Being Able to Contribute to the World**

[Strategic Objective 1] Cultivating global leaders with a broad range of exceptional qualities and the power of insight

- 2. **Research That Will Ultimately Contribute to Real World Peace and Happiness in Human Society**

[Strategic Objective 2] Advancing Original Research That Leads to Future Innovations

- 3. **Graduates Who Will Contribute to the Public Good as Global Leaders**

[Strategic Objective 3] Creating Robust Lifelong Networks between Alumni and Regions

<University Management Vision>

- 4. **Asia's Premier "Model University" Adaptable to a Changing World**

[Strategic Objective 4] Establishing a Dynamic Organizational Framework Adaptable to a Changing World



Core Strategy

[Admissions Strategy]

- ◆ Radical Reform of the Admissions System

[Education and Learning Strategy]

- ◆ Reconstruction of the Education System to Develop Global Leaders
- ◆ Educational Content Open to the Public in Many Languages
- ◆ A Switch to an Interactive Problem Finding and Solving Style of Education
- ◆ Promotion of Proactive Student Planning in University Education and Research
- ◆ Fostering Pride as Waseda People in the World

[Development Strategy]

- ◆ Promotion of Original Research and Enhancement of the Ability to Deliver This Internationally
- ◆ Education, Research, and Societal Contributions That Expand to the World
- ◆ New Challenges in Educational and Research Fields

[Management Strategy]

- ◆ Clarification of the Role and Evaluation of Teaching Staff
- ◆ Strengthening of the Financial Structure
- ◆ Establishment of a Progressive University Structure
- ◆ A New Form of Academic Community

Project

Seventy six projects for realizing core strategies

Policy

Eleven basic policies of Waseda University



[Roadmap]

	125th Anniversary								150th Anniversary			
FY	2001	2007	2008	2012	2013	2017	2018	2022	2023	2027	2028	2032
Slogan	Realization of a Global University		Transform Waseda from a Domestic Japanese University to a Global University		Our Commitment to Continue Becoming a University Contributing to the World as Asia's Leading University							
Grand Design Next 125	Grand Design		Next125									
Vision 150					STAGE 1		STAGE 2		STAGE 3		STAGE 4	
Review and Improvement ⇒PDCA	General review of items achieved		Mid-term review General Review		Each project will be reviewed each year and its performance will be announced. General review will be conducted every five years for target adjustments.							



[Numerical Targets]

1. Number of Students

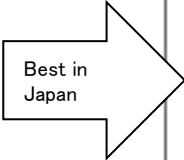

		FY2012	FY2032	Notes
Undergraduate Schools	Commuters, excluding distance learners	43,974	35,000	• Make the number of commuters (including those who are enrolled in the University more than the standard number of years) 35,000 in 20 years so as for the University to enhance education quality.
Graduate Schools	Master's programs, Doctoral programs, professional	9,357	15,000	• Increase the number of students enrolled in Master's and Doctoral programs, which include students having working experience, so that the University may supply a highly sophisticated pool of human resources adaptable to societal changes.

2. Number of Faculty Members (Undergraduate and Graduate Schools)

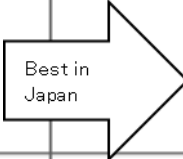
		FY2012	FY2032	Notes
Full-time Faculty Members		1,679	2,000	• Reduce the overall number of subjects so that faculty members may apply more energy to one course subject, enhancing course quality. • Full-time faculty members include full-time researchers and exclude assistants and research associates.
Ratio of Faculty Members to Students (Faculty Members: Students)		1:32	1:25	



3. Internationalization

	FY2012	FY2032	Notes
Non-Japanese Students (International Students) 	4,362	10,000 (20%)	• Make 20% of all students non-Japanese students in 20 years so that the University may respond to changing international environments surrounding higher education and research.
Students Going Abroad to Study 	2,399	All students	<ul style="list-style-type: none"> • Make sure that all Japanese students will have gone abroad for such purposes as to study before graduation. • The numbers to the left are the number of students having and who will have studied abroad in one way or another, which includes participants to Short-Term Program, Fee Based One-Semester Program, and 1-Year Program.
Non-Japanese Faculty Members	147	400 (20%)	• The numbers to the left represent full-time non-Japanese faculty members and full-time non-Japanese researchers. Make 20% of the faculty members non-Japanese members in 20 years.

4. Number of Women (Undergraduate and Graduate Schools)

	FY2012	FY2032	Notes
Female Students (Undergraduate and Graduate Schools) 	18,800	25,000/50,000 (50%)	• Make expected ratios of female students, female faculty members, and female staff members to entire students, faculty members, and staff members 50%, 30%, and 50%, respectively, in 20 years.
Female Faculty Members	226	600 (30%)	• The number of faculty members is the combined number of full-time faculty members and full-time researchers. The number of staff members is the combined number of full-time staff members and full-time contract staff members.
Female Staff Members / Staff Members	344/1,073	537/1,073 (50%)	

**6. Number of Subjects and Classes**

	FY2012	FY2032	Notes
Undergraduate Schools	17,779	13,300	• Reduce the total number of subjects having been established or to be established, for the purpose of providing educational content of high intensity, by reorganizing, integrating, or abolishing course subjects and by utilizing external educational resources.
Graduate Schools	7,707	5,800	

7. Research Funds

	FY2011	FY2032	Notes
Incoming Research Funds	8.9 billion yen	20 billion yen	• Strive to cover in 20 years approximately 20% of income by incoming research funds so that the University may appropriate external research funds to create a system for promoting research projects autonomously.

8. Donations

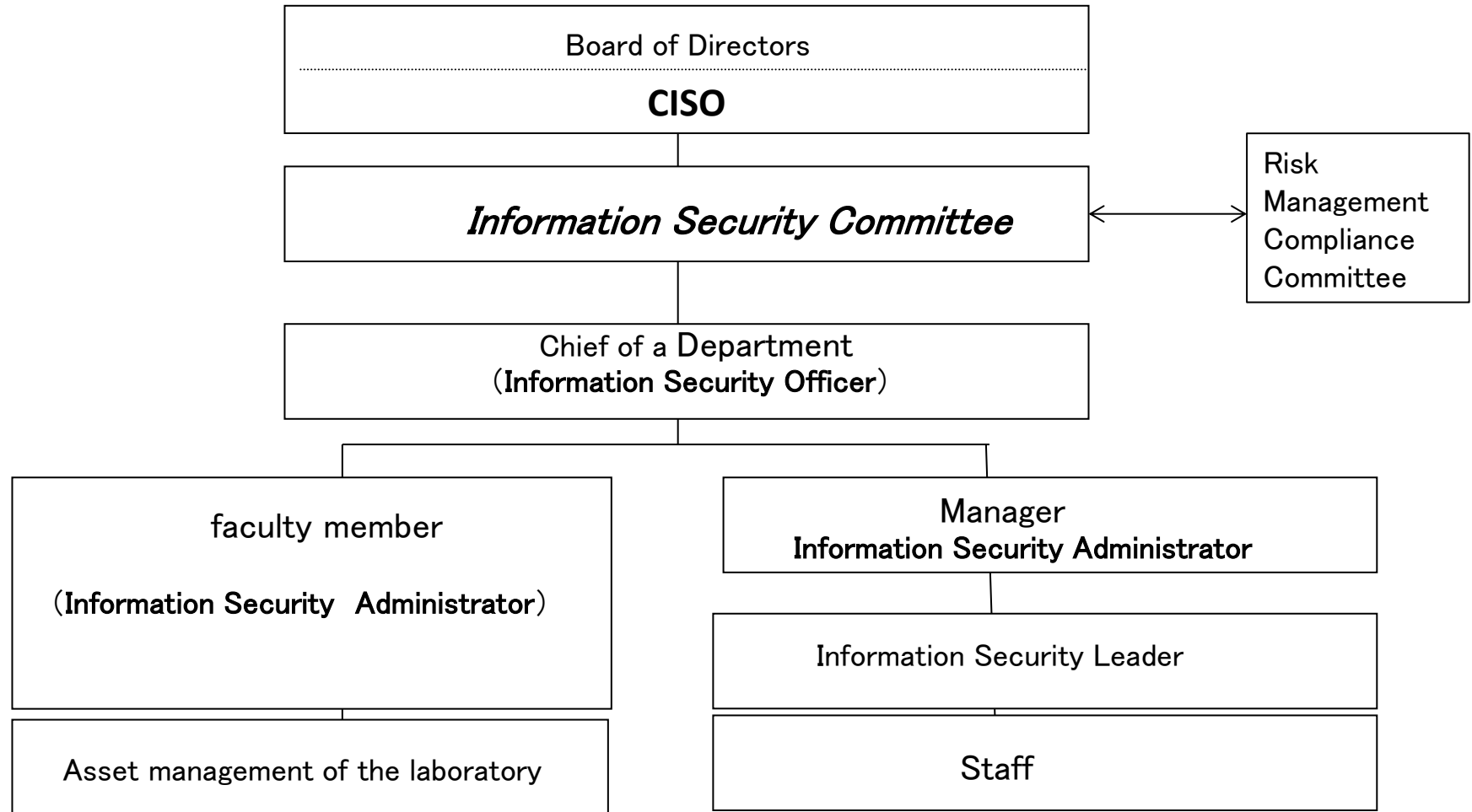
	FY2011	FY2032	Notes
Donations	2.2 billion yen	10 billion yen	• Strive to cover in 20 years approximately 10% of income by donations.

9. Number of Alumni Members

	FY2012	FY2032	Notes
Alumni (Those Who Have Paid Membership Fees for the WUAA)	Approximately 580,000 (Approximately 130,000)	Approximately 700,000 (Approximately 350,000)	• Reinforce collaboration with alumni and increase the number of alumni members who pays membership fees for the Waseda University Alumni Association (WUAA).

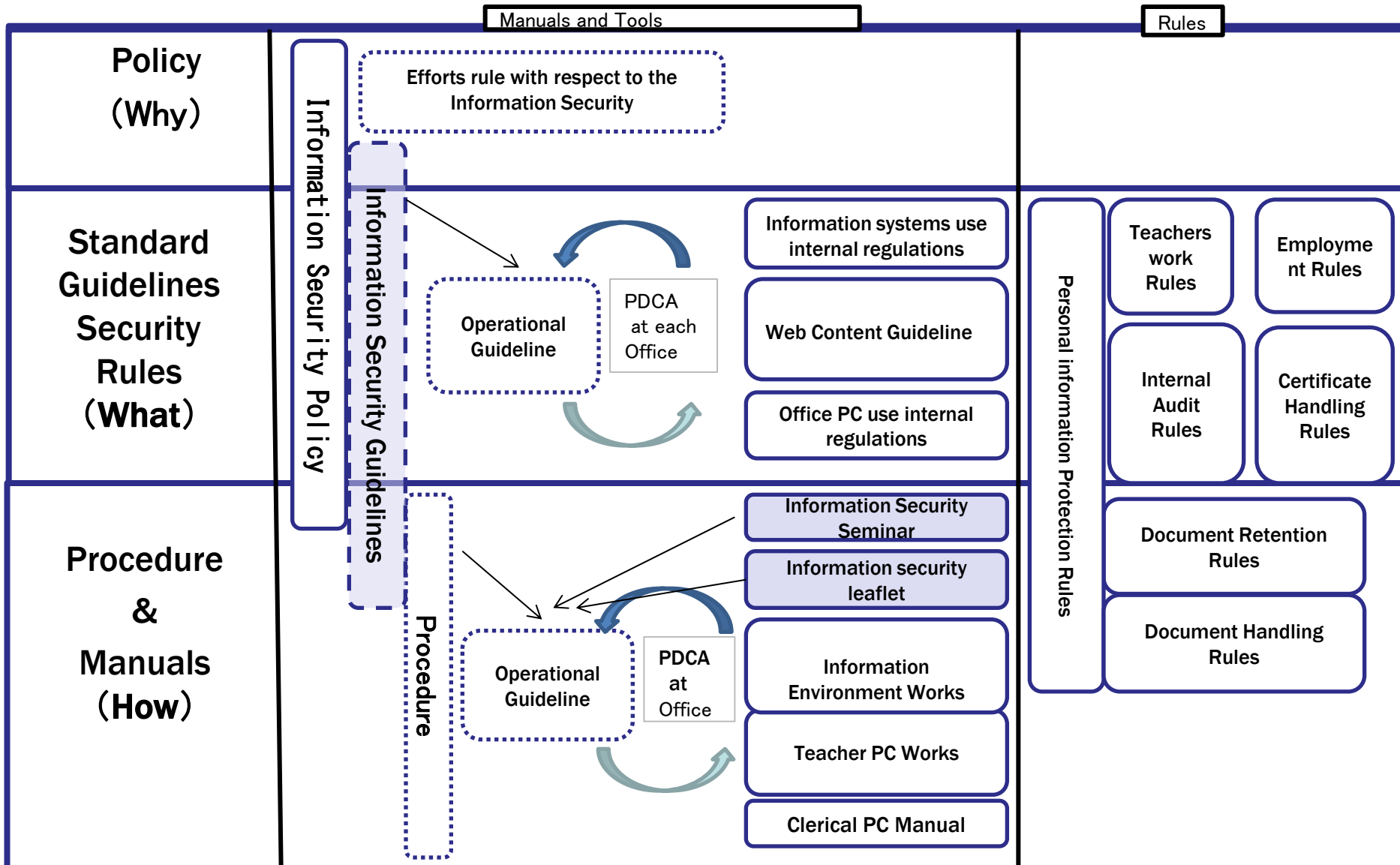


Information Security Promotion System





The execution of the Information Security Promotion





NTT endowed courses at Waseda Univ. started in April 2015

- 1. Advanced cyber-attack and cyber-defense technologies**
Graduate school (master's degree), spring semester
Designed to accept 10 students to conduct advanced exercises.
More than 40 students were interested in this course and those enrolled were chosen by a lottery in 2015.
 - 2. Introduction to cyber-attack and cyber-defense technologies**
Undergraduates in their 3rd year and higher, autumn semester, more than 100 students enrolled in 2015 and 2016
- Students are highly interested in *countermeasure technology against cyberattacks*.