

# UBL Transport SC

Status Report

F2F Meeting

April 2009

# Background

- Established as a subcommittee of UBL TC in Aug 2005
  - chaired by Kama Kamarudin, Crimsonlogic
  - with Thomas Lee as editor
- Chartered to focus on Transport UBL
- Aug 07, Kama relinquished Chair (due to work reassignment)
  - Andy Schoka, acting Chair

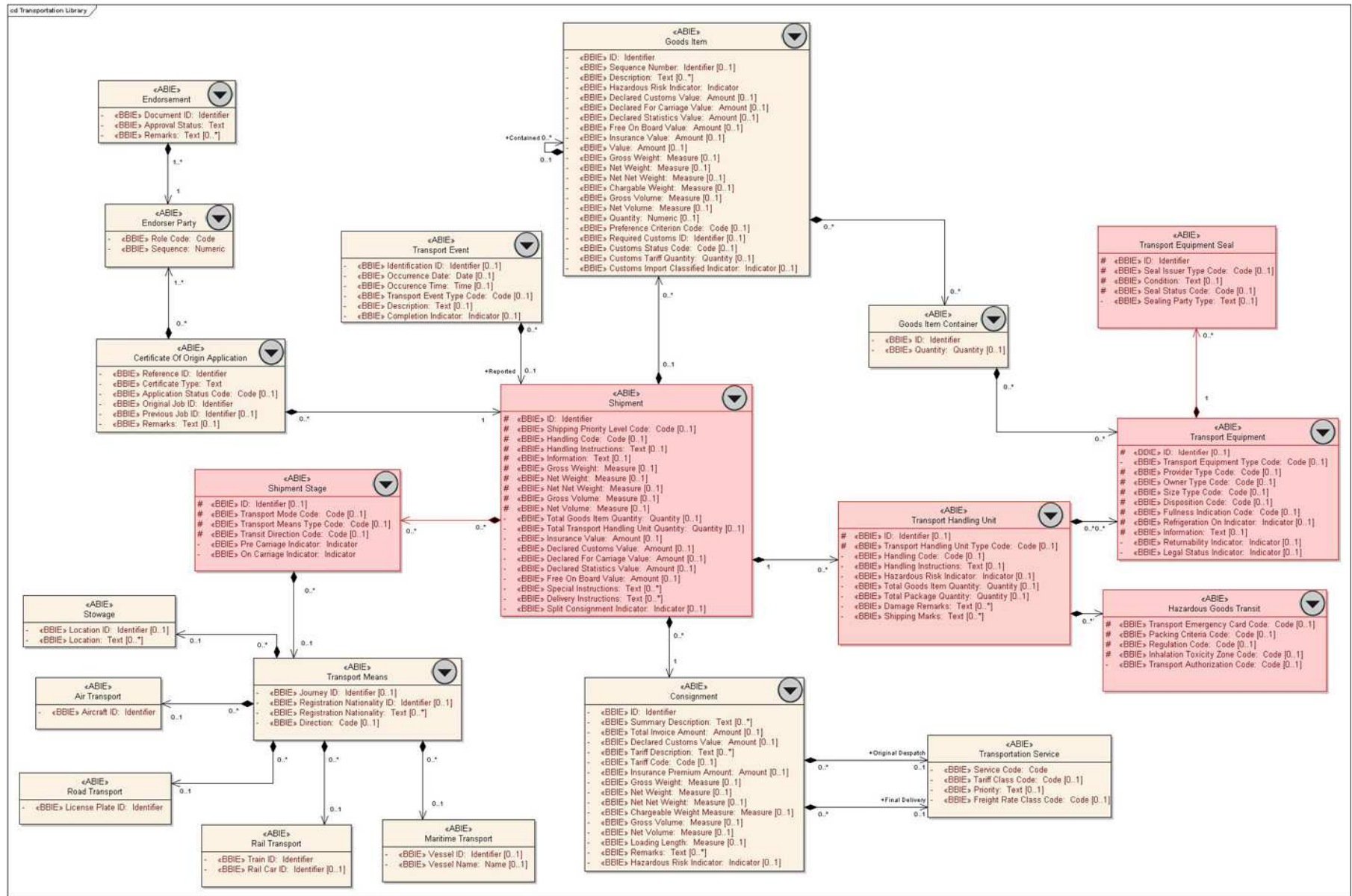
# UBL Transportation Subcommittee Charter

- 1. To liaise with governments, industry, and organizations responsible for e-commerce solutions to identify requirements for the development and implementation of UBL Transportation documents.
- 2. To develop, document and maintain the conceptual models for the UBL Transportation package.
- 3. To foster implementations of UBL for Transportation through coordination, guidance, and responsiveness to queries in order to test the viability of UBL implementations in real-world scenarios.
- 4. To discover general principles for the development and selection of UBL facilities and for the adaptations of human interface presentations (output and input) for the Transportation context.
- 5. To liaise regarding the Transportation models with other subcommittees in UBL as required.
- 6. To develop informative materials as an aid to developers of UBL transportation applications.

# UBL 2.0 Introduced Transport

- OASIS Standard in December 2006
- 31 documents
  - Extended procurement
    - Catalogue, Ordering, Fulfilment, Billing processes
  - **Transport**
    - **Initiate Transport Service, Certificate of Origin, Transport Status, Freight Billing**
- Package Content
  - XSD schemas (xsd dir)
  - Data model, class diagram (uml dir)
  - Document spreadsheet model, excel (mod dir)
  - Sample instance (xml dir)
- Compliant with CCTS

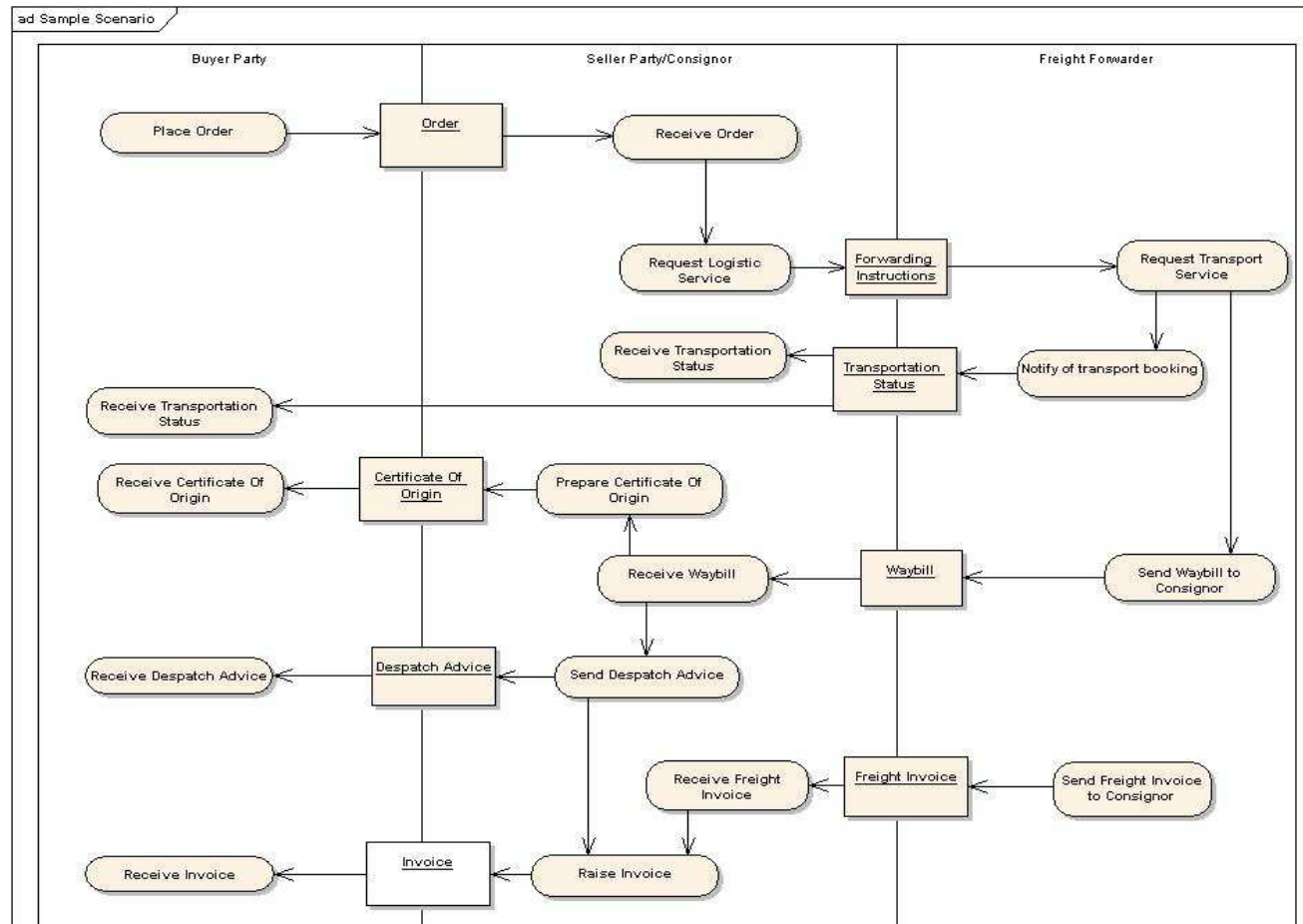
# UBL 2.0 Transport Data Model



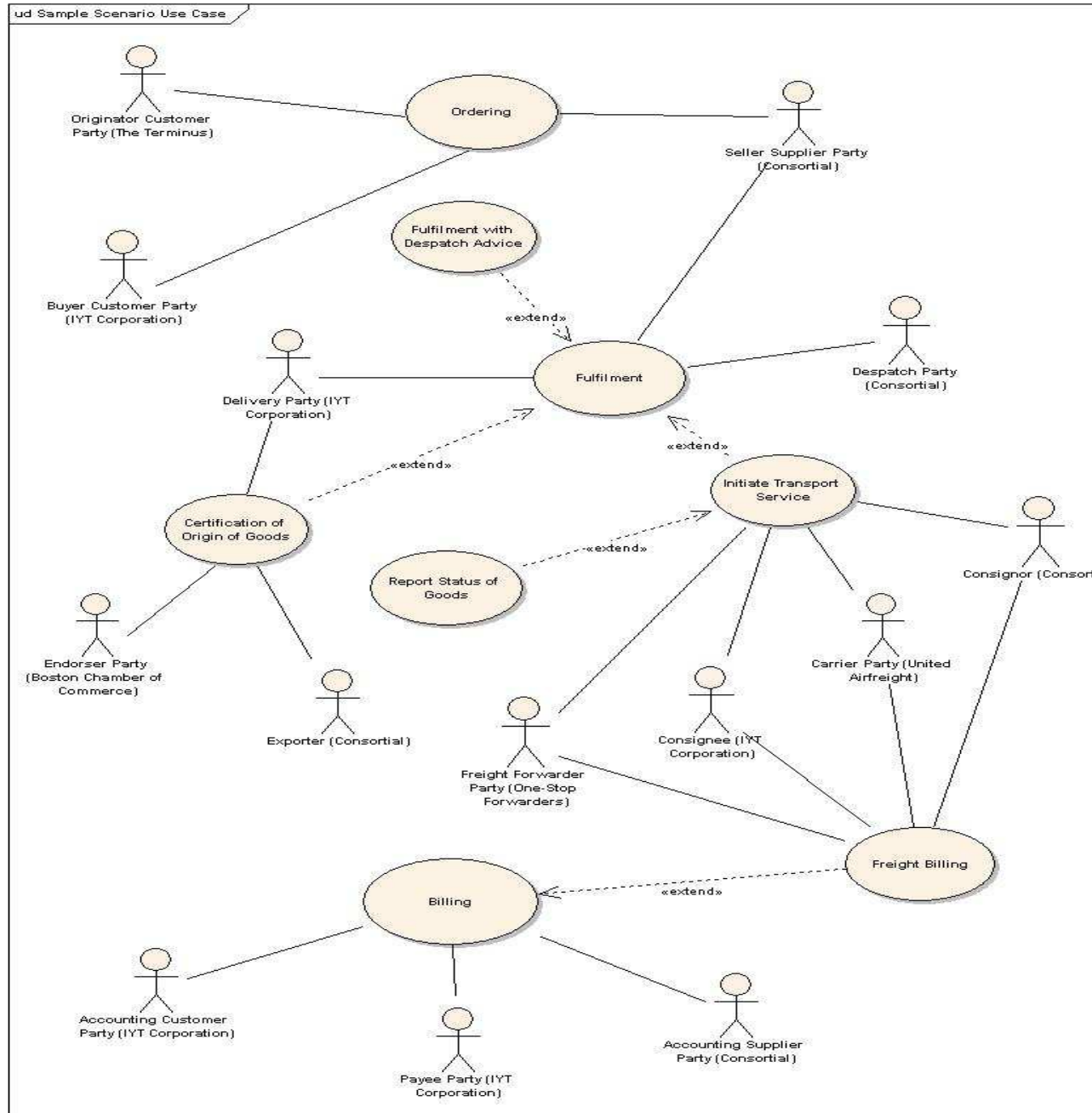
# UBL BITS

## - Basic International Trade Scenario (a work in progress)

- Describes the business scenario related to the UBL Basic International Trade process
- Provided to demonstrate a basic, and therefore theoretical, use of UBL document exchanges
- Contains sample parties and sample data
- Work in progress



# UBL BITS Scenario



# Recent Activities

- Exploring further extensions of 2.0 transport library based upon additional user requirements
  - US DOT's CEFM test and use of UBL triggered further tests (e.g. Kansas City)
  - Recent interest in UBL expressed by the Norwegian Freightwise project.

# Plans

- Continue collaboration through periodic telecons
- Targeted analyses:
  - US DOT EFM use of UBL
  - Freightwise consideration of UBL